

This document is uncontrolled once printed. Please check on SharePoint for the most up-to-date version.

SOP 10 Day Rule Flowchart

Issue Date:	28.9.15
Date of Next Review:	Last reviewed 04.11.2021 Next review 04.11.24
Author Name:	Michaela Wilson Reviewed by S Delaney
Author Job Title:	Imaging Governance and ISAS lead
Approved:	Approved IRMER 07/11/17
Responsible Persons:	All Staff
ISAS Standards	SA1,PE4
CQC Outcomes	9,12 and 17

Contents

Flowchart	3
Responsibilities	3
Procedure	3
References and Related Documentation	3
Appendices	3

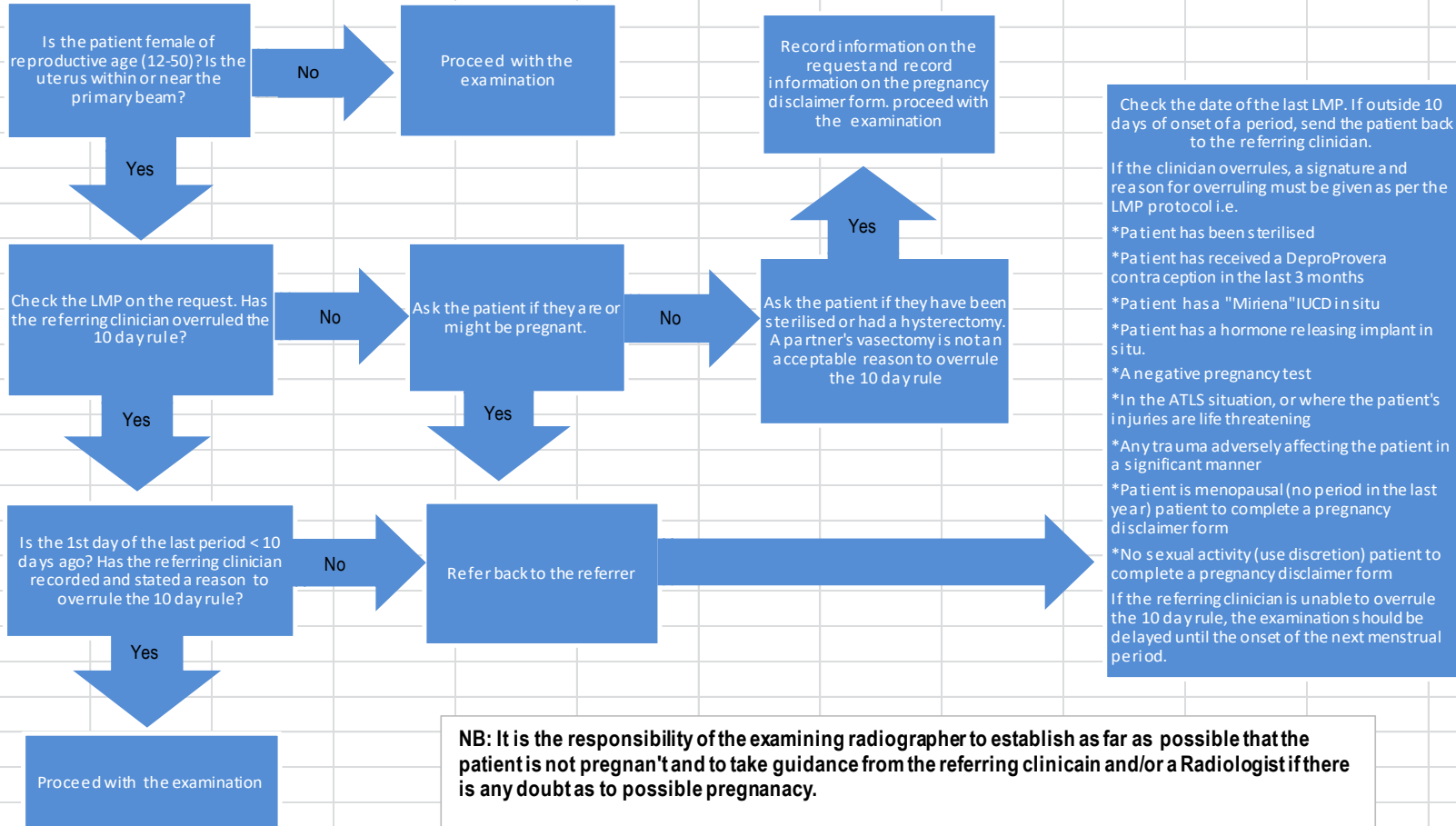


IMAGING DIRECTORATE

DIAGNOSTIC EXPOSURE OF WOMEN OF REPRODUCTIVE CAPACITY (12-50 Years)

The 10 day rule is applied to all examinations where the uterus lies in or near the primary beam

i.e. Pelvis, Abdomen, Hips, Lumbar/thoracic spine, femur, interventional, arteriography, barium exams, CT and ERCP's



Scope and Purpose of SOP

The 10 day rule flowchart guides the referrer and radiographer through the process of applying the 10 day rule for female patients undergoing x-ray examinations between the ages of 12-50 where the primary beam is in or near the uterus.

Responsibilities

All staffs are responsible to ensure the 10 day rule is applied to the appropriate patients, prior to booking an examination, or x-raying the patient. The rule can be overruled in specific circumstances as listed on the chart.

Procedure

See Chart for application of the 10 day rule.

References and Related Documentation

Disclaimer forms are available on SharePoint to be completed when the patient is disclaiming that she can be pregnant at the time of the examination.

Appendices

N/A