

Obstetric Haemorrhage

| | | | |
|---|--|------------------------|--|
| Classification: | Guideline | | |
| Authors Name: | Erum Khan, Julie Cooper, Janice Styles, Caroline Lowe, Georgena Leroux, Terrie Perry, Jasmine MBeharry | | |
| Authors Job Title: | Consultant Obstetrician, Head of Midwifery, Midwifery Matron, Specialist Transfusion Practitioner, Practice Development Midwife, Specialist Transfusion Practitioner Blood Transfusion Laboratory Manager, Consultant Obstetrician | | |
| Authors Division: | Women's and Children's Health | | |
| Departments/Group this Document applies to: | Maternity | | |
| Approval Group: Maternity Guidelines, Women's Health CIG | Date of Approval: | 12/2020 | |
| | Last Review: | 11/2020 | |
| | Review Date: | 12/2023 | |
| Unique Identifier: MIDW/GL/125 | Status: Approved | Version No: 4.4 | |
| Guideline to be followed by (target staff): For use with all women during the antenatal, intrapartum and postnatal periods | | | |
| To be read in conjunction with the following documents: | | | |
| <ul style="list-style-type: none"> • Haematological Management of Major Haemorrhage in Adults • Blood Transfusion Policy for Administration of Blood, Blood Components and Blood Products and the management of Transfused Patients • Trust Platelet indication Guideline • Fresh Frozen Plasma (FFP) and Cryoprecipitate Indication Guidance • Women who decline Blood and Blood Products • Treatment of Patients Refusing Blood and Blood Components • Placenta Previa Guideline • Prophylactic Anti-D Immunoglobulin | | | |
| Are there any eCARE implications? No | | | |
| CQC Fundamental standards: | | | |
| Regulation 9 – person centred care | | | |
| Regulation 10 – dignity and respect | | | |
| Regulation 11 – Need for consent | | | |
| Regulation 12 – Safe care and treatment | | | |
| Regulation 13 – Safeguarding service users from abuse and improper treatment | | | |
| Regulation 14 – Meeting nutritional and hydration needs | | | |
| Regulation 15 – Premises and equipment | | | |

Regulation 16 – Receiving and acting on complaints
Regulation 17 – Good governance
Regulation 18 – Staffing
Regulation 19 – Fit and proper

Disclaimer

Since every patient's history is different, and even the most exhaustive sources of information cannot cover every possible eventuality, you should be aware that all information is provided in this document on the basis that the healthcare professionals responsible for patient care will retain full and sole responsibility for decisions relating to patient care; the document is intended to supplement, not substitute for, the expertise and judgment of physicians, pharmacists or other healthcare professionals and should not be taken as an indication of suitability of a particular treatment for a particular individual. The ultimate responsibility for the use of the guideline, dosage of drugs and correct following of instructions as well as the interpretation of the published material **lies solely with you** as the medical practitioner.

Index

| | |
|---|----|
| Guideline Statement | 4 |
| Executive Summary | 4 |
| Implementation and dissemination of document | 5 |
| PART ONE – ANTEPARTUM HAEMORRHAGE (APH) | 5 |
| 1.0 Roles and Responsibilities: | 5 |
| 2.0 Implementation and dissemination of document | 5 |
| 2.1 Definition of antepartum haemorrhage | 5 |
| 2.2 Initial assessment of APH | 6 |
| 2.3 Management of Antepartum Haemorrhage | 7 |
| 2.3.1 Management of Minor APH or Clinically stable patient with Major APH | 7 |
| 2.3.2 Major Antepartum Haemorrhage | 10 |
| 2.3.3 Management of RhD-negative Mothers | 11 |
| 2.3.4 Expectant management | 12 |
| 2.3.5 Bleeding of uncertain origin | 12 |
| PART TWO - POSTPARTUM HAEMORRHAGE | 13 |
| Definitions | 13 |
| 1.0 Roles and Responsibilities | 13 |
| 2.0 Processes and procedures | 13 |
| 2.1 Risk factors and prevention of PPH | 13 |
| 2.2 Primary Postpartum Haemorrhage (PPH) | 15 |
| Flow chart 2 - Management of PPH | 17 |
| 2.3 Flow Chart 3 - Major Obstetric Haemorrhage | 18 |
| 2.3.1 Management in Theatre | 19 |
| Flow Chart 4: Management of MOH – Theatre Protocol | 21 |
| 2.3.2 Management of PPH in the community | 22 |
| Flow Chart 5: Obstetric Management of PPH in the Community | 22 |
| 3.0 Secondary Postpartum Haemorrhage | 23 |
| 4.0 Debriefing | 23 |

This document is uncontrolled once printed. Please check on the Trust's Intranet site for the most up to date version.

©Milton Keynes University Hospital NHS Foundation Trust

| | |
|---|----|
| 5.0 Documentation..... | 23 |
| 6.0 Skills and Drills Training..... | 23 |
| 7.0 References | 24 |
| 8.0 Governance | 29 |
| 8.1 Document review history..... | 29 |
| 8.2 Consultation History..... | 29 |
| 8.3 Audit and monitoring..... | 30 |
| 8.4 Equality Impact Assessment..... | 31 |
| Appendix 1: Acute Major Blood Loss – A Template Guideline | 32 |
| Appendix 2: Major Haemorrhage Proforma..... | 33 |
| Appendix 3: Transfusion Team Processes..... | 37 |
| Appendix 4: PPH Proforma..... | 40 |
| Appendix 5: PPH Risk Assessment | 42 |

Guideline Statement

This guideline is to assist all clinical staff with the effective management of Obstetric Haemorrhage within the antenatal, intrapartum and postnatal periods. This guideline is divided into two parts:

- Part One refers specifically to Antepartum Haemorrhage
- Part Two refers specifically to Postpartum Haemorrhage.

Executive Summary

PART ONE - ANTEPARTUM HAEMORRHAGE (APH)

Any vaginal bleeding during pregnancy is a potentially serious complication, which may lead to early labour or may be the presenting sign of either placental abruption or placenta praevia.

Massive haemorrhage from placenta praevia and placental abruption are important causes of maternal death. Placental abruption is associated with high rates of perinatal mortality and morbidity.

This guideline outlines the management of women who present with an APH before and after a confirmed diagnosis is made.

PART TWO - POSTPARTUM HAEMORRHAGE (PPH)

Postpartum haemorrhage is a common complication of birth and remains a significant cause of maternal mortality. PPH is the third most common direct cause of maternal mortality; complicated by interventions that are "too little done too late". Most PPHs occur in women with no known risk factors.

Primary postpartum haemorrhage is considered to be a blood loss from the genital tract equal to or >500mls (vaginal birth) or >1000mls (caesarean birth) within 24 hours of the birth of a baby. Secondary postpartum Haemorrhage is excessive' bleeding from the genital tract from 24 hours and up to 6 weeks in the postnatal period.

Postpartum haemorrhage may result from uterine atony, retained placental tissue, obstetric injury or coagulopathy. In women who are anaemic, losses of less than 500mls may cause symptoms.

This guideline outlines the management of Postpartum Haemorrhage including:

- Primary Postpartum Haemorrhage
- Secondary Postpartum Haemorrhage
- Major Obstetric Haemorrhage

Abbreviations

| | |
|------|--|
| FBC | full blood count |
| PT | prothrombin time |
| APTT | activated partial thromboplastin time |
| FFP | fresh frozen plasma |
| DIC | Disseminated intravascular coagulation |
| APH | Antepartum haemorrhage |
| PPH | Postpartum haemorrhage |

| | |
|-------|-----------------------------------|
| BMS | Biomedical scientist |
| MOH | Major obstetric haemorrhage |
| CTG | Cardiotocography |
| NHSBT | NHS blood and Transplant |
| FMH | Fetal maternal haemorrhage |
| EBL | Estimated blood loss |
| MCA | Maternity care assistant |
| ECG | Electrocardiography |
| ODP | Operating department practitioner |
| USS | Ultrasound scan |
| MKUH | Milton Keynes university hospital |
| IUGR | Intra uterine growth retardation |
| CVP | Central venous line |
| TXA | Tranexamic acid |
| EUA | Examination Under anaesthetic |

Implementation and dissemination of document

This guideline is available on the Intranet and has followed the Trust's full Guideline review process prior to publication.

PART ONE – ANTEPARTUM HAEMORRHAGE (APH)

1.0 Roles and Responsibilities:

Doctors – decision making, discussion, planning and providing care

Midwives and nurses – Recognition, decision making and antepartum care

2.0 Implementation and dissemination of document

2.1 Definition of antepartum haemorrhage

Defined as bleeding from the genital tract after 24 weeks gestation and before birth. The management of APH depends on the estimated amount of bleeding and the impact on maternal and fetal well-being. All patients with vaginal bleeding at 18 weeks gestation or more should be seen and assessed on delivery suite.

Remember: Haemorrhage may be concealed within the abdominal cavity; the degree of shock may be more marked than the amount of revealed bleeding suggests.

- Minor- blood loss less than 50ml that has settled.
- Moderate - blood loss 50-1000ml with no signs of shock.
- Major- blood loss greater than 1000ml and or signs of clinical shock.

2.2 Initial assessment of APH

Aetiology of antepartum bleeding from the genital tract:

- Placentas lying partly or wholly in the lower uterine segment - "placenta praevia".
- Placental abruption
- Local causes e.g. cervical polyp
- Maternal coagulopathy
- Vasa Praevia (women with accessory lobe on USS, velamentous cord insertion and 3rd trimester placenta migration)
- Unknown cause (i.e. causes listed above have been excluded).

Initial assessment should include:

- Review of placental site
- Recent fetal movements
- Estimation of the amount of bleeding
- Degree and characteristics of any associated abdominal pain or other symptoms

Appropriate examination should include:

- Maternal observations (pulse, BP, respiratory rate and temperature)
- Fetal monitoring (appropriate for gestation and ultrasound as indicated)
- Abdominal examination
- Cardiovascular and respiratory system examination as clinically indicated
- Consider speculum examination in any antepartum haemorrhage.

The Obstetric Registrar should review all women presenting with antepartum haemorrhage. Never perform a vaginal examination in such women without prior discussion with the Obstetric Registrar.

Clinical features of shock in pregnancy related to the volume of blood loss

| Blood Loss | Clinical features | Level of shock |
|---|--|----------------|
| 10% blood loss ~500 mL if 50 kg ~800 mL if 80 kg | Mild tachycardia Normal blood pressure | Compensated |
| 15% blood loss ~750 mL if 50 kg ~1200 mL if 80 kg | Tachycardia (> 100 bpm) Hypotension (systolic 90-80 mmHg) Tachynoea (21 – 30 breaths/minute) Pallor, sweating Weakness, faintness, thirst | Mild |
| 30% blood loss ~ 1500 mL if 50 kg ~ 2400 mL if 80 kg | Rapid, weak pulse (> 120 bpm) Moderate hypotension (systolic 80-60 mmHg) Tachynoea (>30 breaths/minute) Pallor, cold clammy skin Poor urine output (<30 mL/hour) Restlessness, anxiety, confusion | Moderate |
| 40% blood loss ~ 2000 mL if 50 kg ~ 3200 mL if 80 kg | Rapid, weak pulse (> 140 bpm) or bradycardia (<60 bpm) Severe hypotension (<70 mmHg) Pallor, cold clammy skin, peripheral cyanosis Air hunger Anuria Confusion or unconsciousness, collapse | Severe |

PROMPT
Course
Manual
(Third
Edition)

2.3 Management of Antepartum Haemorrhage

For women with antepartum haemorrhage, consider informing Blood Bank early on 85774 as this is vital to ensure that they are aware of the urgency of the situation. Blood Bank can also be contacted via on call BMS on Bleep 1412.

An MOH call would be activated via a 2222 call followed by an immediate call to BMS on Ext 85774. Blood bank can also be contacted on bleep 1412.

2.3.1 Management of Minor APH or Clinically stable patient with Major APH

Blood loss less than 1000ml blood loss (<15% of blood volume) and not clinically compromised. If haemorrhage is minor then management is as follows:

1. Establish history and read patient's notes. Check placental location at 20 week scan and later ultrasound scan for evidence of accessory lobe of placenta, velamentous cord insertion, 3rd

- trimester placental migration. Previous cervical smear history is useful to assess for possibility of neoplastic lesion of cervix (may present as post coital bleeding).
2. Abdominal palpation (hard, tender uterus is suggestive of significant abruption) and auscultation of fetal heart.
 3. Perform speculum examination once placenta praevia is ruled out, if any doubt about cervical; dilatation, perform vaginal examination.
 4. If gestation is beyond 28 weeks, continuous CTG should be conducted whilst bleeding or pain persists, Consider CTG between 26-28 weeks gestation if significant bleeding. Intermittent fetal heart auscultation is indicated after 24 weeks gestation. If any evidence of fetal compromise, involve consultant obstetrician to decide about emergency caesarean section.
 5. Insert 16 gauge IV cannula and take blood for:
 - FBC, clotting and fibrinogen
 - Take a Kleihauer. Please be aware that if the Kleihauer detects a bleed >2mls, this is checked by flow cytometry which requires sending away to NHSBT. This may result in a delay of confirmation of the size of the Fetal Maternal Haemorrhage (FMH) bleed. The Kleihauer is not diagnostic for a FMH but is to dose the Anti D required for an FMH in an Rh negative woman without immune Anti D.
 - Group and save
 - Cross match 2 units of blood and state it is Antepartum Haemorrhage on the paperwork
 - Consider second cannula
 -

NOTE – THE KLEIHauer TEST MUST NOT BE USED TO DIAGNOSE PLACENTAL ABRUPTION OR A FETO-MATERNAL HAEMORRHAGE

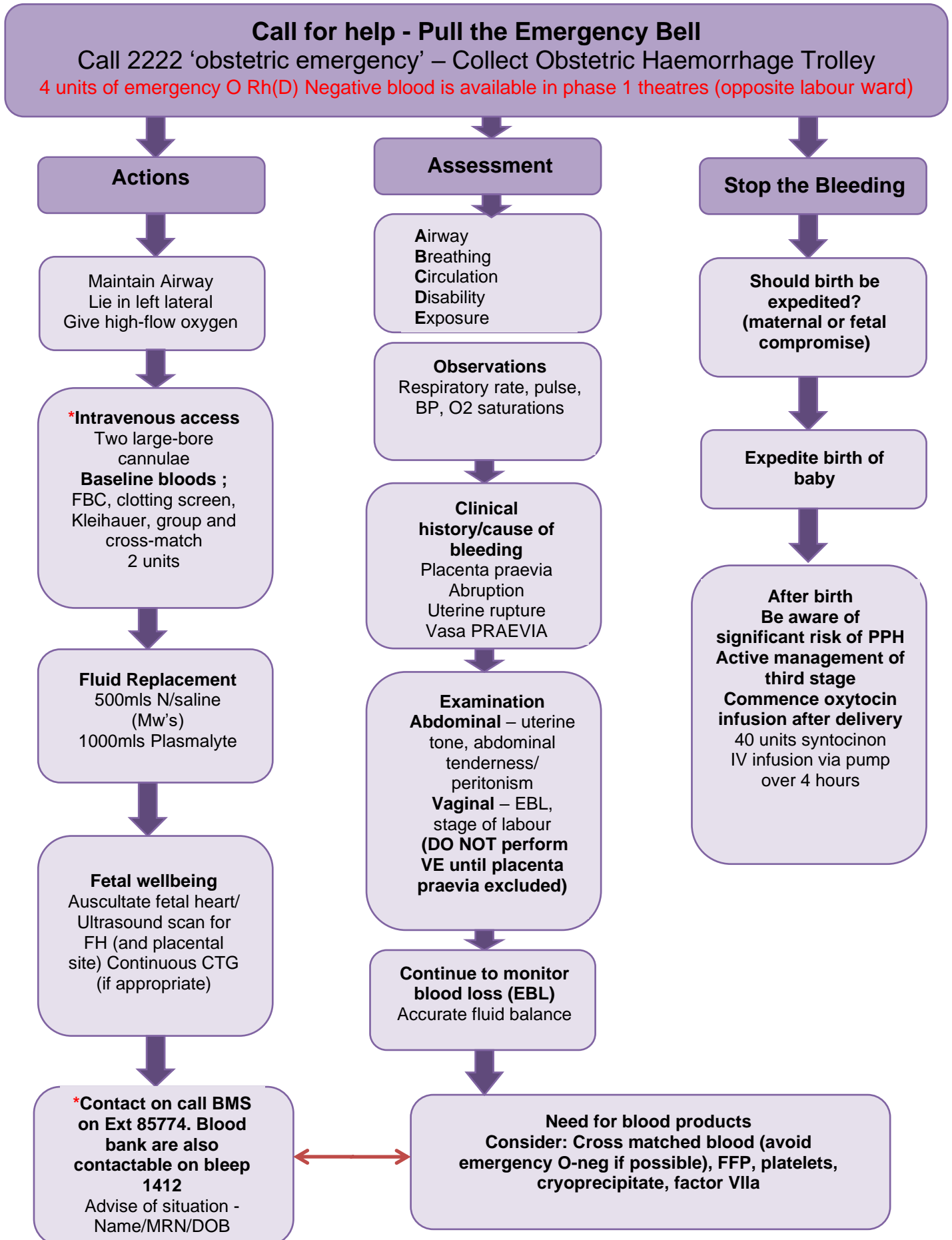
6. Administer steroids (if not given prior) between 24-34 completed weeks of gestation. See guidance on steroid administration.
7. Consider magnesium sulphate (see preterm pre labour delivery guideline)

If bleeding has ceased, where there is no evidence of labour and maternal and fetal observations are satisfactory, then the woman may be transferred to the antenatal ward.

If significant bleeding, inform lead midwife, obstetrician and anaesthetist. Where there is significant bleeding or risk of further bleeding and emergency delivery, the anaesthetist must be notified to perform assessment to plan anaesthetic.

This document is uncontrolled once printed. Please check on the Trust's Intranet site for the most up to date version.
©Milton Keynes University Hospital NHS Foundation Trust

Flow Chart One - Management of Antepartum Haemorrhage



2.3.2 Major Antepartum Haemorrhage

Blood loss of between 1000mls to 1500mls.

See Appendix 1 - Acute Major Blood Loss - A Template Guideline

Management involves four components

- 1: Communication (call for help)
- 2: Resuscitation
- 3: Monitoring and investigation
- 4: Arresting the bleeding- definitive treatment

1: Communication: Rapid assessment of situation (Airway, Breathing, Circulation and estimated loss)

- Pull emergency bell and request to call 2222 follow up with a call to blood bank on Ext 85774 and state obstetric emergency and location. Blood bank are also contactable on bleep 1412.
- If the call is made and it is then deemed that situation is under control, the senior midwife will liaise with the multi-disciplinary team and further action will be made accordingly.
- One midwife is assigned to record keeping (where possible)
- One midwife / MCA assigned to theatre preparation
- Identify a specific person responsible to liaise with the blood bank. This may be the Midwife in Charge, Labour Ward Coordinator, second Labour ward band 7 or any available midwife.
- MCA assigned for assistance.
- Keep the woman and her birth partner informed of what is happening.
- Immediate resuscitation of the mother is the first priority.
- Where massive haemorrhage occurs the viability of the fetus is compromised and is generally, secondary to resuscitation of the mother.

2: Resuscitation

- Airway maintenance and O2 via mask 10-15L /min.
- Keep patient warm and position flat with a wedge or in left lateral (use of warmed fluids and BAIR HUGGERS should be considered).
- Transfuse blood as soon as possible.
- Until blood is available infuse up to maximum volume of 3.5 L of clear fluids (up to 2 litres of ideally warmed Hartmann's followed by 1.5 litre of ideally warmed colloid (Consider the risk of coagulopathy, liaise closely with Anaesthetist and on call BMS)
- Blood transfusion: O negative or cross-matched group specific blood as advised by blood bank, depending on urgency. The first MOH "pack" will contain 4 units of red cells. The second pack will contain 4 more red cells and thawed FFP if advised and platelets and cryoprecipitate should be considered thereafter.

Note: Coagulopathy is common with placental abruption, consider FFP early.

It is important to inform the lab to stand down when no further blood components are required.

Follow the Trust's Haematological Management of Major Haemorrhage in Adults Protocol

3: Monitoring and investigations

- 16-G cannula (grey) x 2 inserted (Consider intraosseous management if IV lines are difficult). Note Intraosseous blood samples cannot currently be processed by pathology
- Take a full blood count (FBC) coagulation, fibrinogen, U&Es and LFTs. ABGs (when major haemorrhage) and crossmatch 2 units of blood
- Identify specific person responsible to liaise with the blood bank on ext 85774 or bleep to 1412 to ensure that they are aware of the urgency of the request.
- Perform observations including SaO₂(oximetry) and document on MEOWS chart.
- Estimate blood loss and document running total.
- Have ECG machine available.
- Haemoglobin estimation by HAEMACUE; to be done by ODP.
- Consider central and arterial lines as indicated.
- Fluid balance chart and insert Foley catheter with urometer.

4: Definitive Management

- Assess fetal viability using USS and / or CTG (plan of management for delivery/ management made)
- Non-viable fetus: confirmed by USS: Vaginal delivery appropriate unless there is placenta praevia, where Caesarean section is still indicated)
- Viable fetus confirmed by CTG and / or USS: Caesarean section must be expedited for all cases of placenta praevia with active bleeding. In cases of placental abruption complicated by fetal compromise a caesarean section is indicated if vaginal delivery is not imminent.

A decision to proceed to caesarean section on a haemodynamically unstable patient should only be made by the Consultant Obstetrician and Anaesthetist following consultation.

2.3.3 Management of RhD-negative Mothers

In all RhD negative women, a Kleihauer test should be performed to gauge the dose of Anti-D immunoglobulin required

The national guidance recommends a minimum of 250IU given below 20 weeks and a minimum of 500IU given above 20 weeks for sensitising events.

However in MKUH we only stock 1500IU vials and as there is no risk associated with receiving a larger dose the patient should be given 1500IU so as to not split the vial.

RECOMMENDATION- 1500IU within 72hours of a sensitising event or when required for prophylaxis.

Where it is necessary to give additional or larger dosage of Anti D immunoglobulin the dose should be based on 125 IU per ml of fetal bleed given intramuscularly.

2.3.4 Expectant management

The aim is to allow the pregnancy to continue to ensure fetal maturity without increasing maternal morbidity or mortality. A decision to deliver prematurely should only be made after consultation with Consultant Obstetrician.

Maternal and fetal monitoring on Ward 9 or 10:

- Daily maternal observations
- Fetal monitoring appropriate for gestational age. Frequency is determined by clinical need.
- Weekly group & save if asymptomatic. If there are known antibodies, low Haemoglobin, high risk of accrete etc, then cross match.is recommended
- Routine iron supplementation as required
- Rhesus negative women will require a Kleihauer test with every episode of fresh bleeding and appropriate prophylactic anti D immunoglobulin should be administered at a minimum interval of 6 weeks in case of recurrent bleeding after 20 weeks. It is important to specify whether new sensitizing events have occurred or whether it is ongoing continuous bleeding. New sensitizing events will require a further dose of Anti D. The 28 week prophylactic Anti D should be given regardless of any dose of anti D given for a sensitizing event.
- A sensitive approach to the emotional and social implications of long term hospitalization

2.3.5 Bleeding of uncertain origin

Often women present with vaginal bleeding when no clear diagnosis is made

The management of these women includes:

- Full history, examination and investigations as outlined above
- Reconfirmation of the placental site and fetal wellbeing
- Hospital admission if clinically indicated
- Serial growth scans for significant recurrent unexplained APH (risk of IUGR)

PART TWO - POSTPARTUM HAEMORRHAGE

Definitions

| Term | Definition |
|--|---|
| Primary Postpartum Haemorrhage | Blood loss from the genital tract equal to or >500mls (vaginal birth) or >1000mls (caesarean birth) within 24 hours of the birth of a baby. |
| Secondary Postpartum Haemorrhage | Excessive bleeding from the genital tract from 24 hours and 6 weeks in the postnatal period. |
| Major Obstetric Haemorrhage | Postpartum haemorrhage =/ >1500ml blood loss |
| EUA | Examination under anaesthetic |
| Subtotal Hysterectomy | Removal of the uterus without the cervix |
| Disseminated Intravascular Coagulation (DIC) | Proteins controlling clotting are used up resulting in an inability to form clots. |
| Haemorrhagic Shock | A life-threatening condition that results when you lose more than 20 percent of your body's blood or fluid supply. |

1.0 Roles and Responsibilities

Doctors – decision making, discussion, planning and providing care.

Midwives and nurses – recognition, decision making, intrapartum and postpartum care.

2.0 Processes and procedures

This guideline adopts a pragmatic approach:

- An estimated blood loss of 500–1000mls (in the absence of clinical signs of shock) prompts **basic measures** of monitoring and 'readiness for resuscitation',
- An estimated loss of more than 1000 ml (or a smaller loss associated with clinical signs of shock, tachycardia, hypotension, tachypnoea, oliguria or delayed peripheral capillary filling) prompts a **full protocol** of measures to resuscitate, monitor and arrest the bleeding.
- A meticulous record of blood loss should be kept as it is usually **UNDER ESTIMATED**.

2.1 Risk factors and prevention of PPH

In situations where there is thought to be an increased risk of postpartum haemorrhage secondary to uterine atony, IV access should be in place and a full blood count and group and save should be obtained during labour.

This document is uncontrolled once printed. Please check on the Trust's Intranet site for the most up to date version.

©Milton Keynes University Hospital NHS Foundation Trust

Prophylactic oxytocin infusion (40 units oxytocin in 500ml of 0.9% saline – 125ml hour via infusion pump) should be considered after delivery e.g. with:

- Previous PPH
- Prolonged (>12 hours) or Rapid labour
- Generalised sepsis
- Chorioamnionitis
- Age >40 yrs
- BMI>35
- Grand multiparity (>para 5)
- Multiple pregnancy
- Polyhydramnios
- Large baby (>4kgs)
- Fibroids
- Anaemia (< 90g/l)
- Previous tocolytic therapy

PPH can also be precipitated by:

- Controlled cord traction prior to placental separation
- Physiological third stage after a long or augmented labour

Women are at a particularly high risk of haemorrhage with the following conditions:

- Placenta praevia
- Placental abruption
- Large or multiple uterine fibroids
- Ruptured uterus
- Emergency Caesarean
- Instrumental delivery
- Pre-existing bleeding disorders i.e. haemophilia
- All women on admission to maternity must have a pph risk assessment (appendix 5) completed.
- PPh risk assessment tool to be reviewed in labour and postnatally.

NOTE: Combinations of any of the above complications with a uterine scar (previous caesarean Section or myomectomy) are especially high risk.

- All women who have had a previous caesarean section must have their placenta site determined. If overlying the caesarean section scar, consider the possibility of placenta accreta or percreta and arrange an MRI
- Obstetric and Anaesthetist consultant presence is mandatory for major placenta praevia caesarean sections and for any caesarean sections where placenta accreta or percreta is suspected.
- Adequate intravenous access (2 large bore 14G -16G cannula) should be in place before surgery starts.
- **At least** 4 units of blood should be cross-matched and immediately available in theatre before elective surgery starts (Major Placenta Praevia or Placenta Accreta). This should be checked

This document is uncontrolled once printed. Please check on the Trust's Intranet site for the most up to date version.

©Milton Keynes University Hospital NHS Foundation Trust

by the Obstetric team performing the surgery before transfer to theatre. Be aware that if the lab does not have a suitable sample, the initial issue of red cells will be emergency O negative.

- A CVP line should be considered either pre-operatively or whenever it is apparent that bleeding is excessive.

2.2 Primary Postpartum Haemorrhage (PPH)

Arresting the bleeding (Consider the 4 T's - Tone, Tissue, Trauma, Thrombin)

The commonest cause of primary PPH is uterine atony. However clinical examination (must be undertaken to exclude other causes):

- Retained products (placenta, membranes, clots).
- Vaginal / cervical lacerations or haematoma.
- Ruptured uterus.
- Broad ligament haematoma
- Extra-genital bleeding.

When uterine atony is perceived to be the cause of the bleeding, the following measures should be instituted, in turn, until bleeding stops:

- 'Rub up the fundus' to stimulate contraction.
- Ensure bladder is empty (Foley catheter, leave in-situ)
- Oxytocin 5 units by IM injection (can have repeat dose)
- Ergometrine 0.5mg by slow IV/IM injection – contraindicated in women with hypertension
- Oxytocin infusion (40 units in 500ml Normal Saline), 125mL/h (unless fluid restriction is necessary)
- Consider Tranexamic Acid 1g IV over 10 minutes (This can be repeated after 30 minutes if the bleeding continues.)
- Carboprost (Hemabate) 0.25mg Intramuscular (repeated at intervals of not less than 15 minutes to a maximum of 8 doses)
- Bimanual Compression
- Misoprostol PR 1000mcg or 800mcg sublingual

Clinical features of shock in pregnancy related to the volume of blood loss

| Blood Loss | Clinical features | Level of shock |
|---|--|----------------|
| 10% blood loss ~500 mL if 50 kg ~800 mL if 80 kg | Mild tachycardia Normal blood pressure | Compensated |
| 15% blood loss ~750 mL if 50 kg ~1200 mL if 80 kg | Tachycardia (> 100 bpm) Hypotension (systolic 90-80 mmHg) Tachynoea (21 – 30 breaths/minute) Pallor, sweating Weakness, faintness, thirst | Mild |
| 30% blood loss ~ 1500 mL if 50 kg ~ 2400 mL if 80 kg | Rapid, weak pulse (> 120 bpm) Moderate hypotension (systolic 80-60 mmHg) Tachynoea (>30 breaths/minute) Pallor, cold clammy skin Poor urine output (<30 mL/hour) Restlessness, anxiety, confusion | Moderate |
| 40% blood loss ~ 2000 mL if 50 kg ~ 3200 mL if 80 kg | Rapid, weak pulse (> 140 bpm) or bradycardia (<60 bpm) Severe hypotension (<70 mmHg) Pallor, cold clammy skin, peripheral cyanosis Air hunger Anuria Confusion or unconsciousness, collapse | Severe |

PROMPT Course Manual (Third Edition)

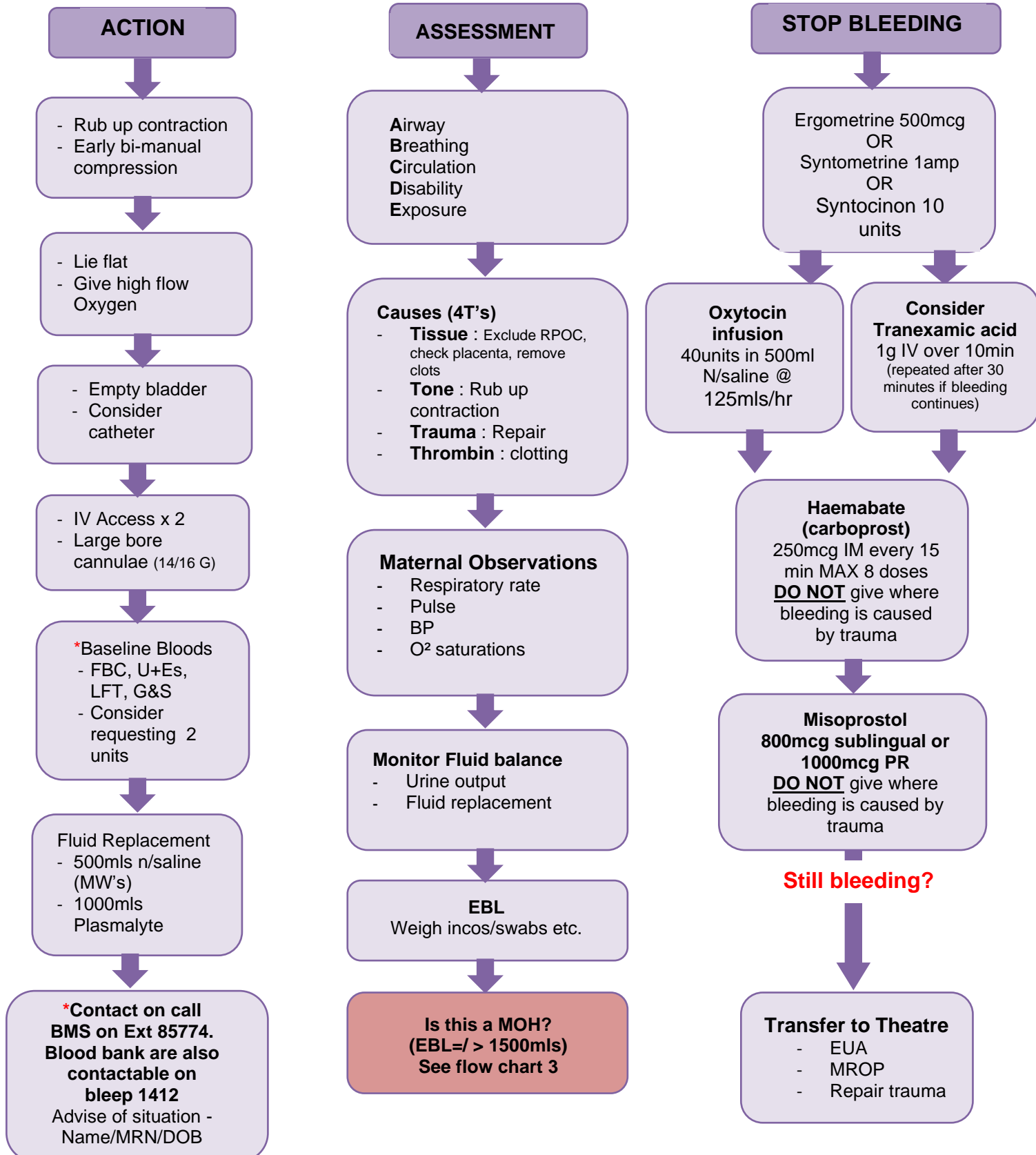
Flow chart 2 - Management of PPH

Recognise PPH EBL > 500ml

Call for help - Pull the Emergency Bell

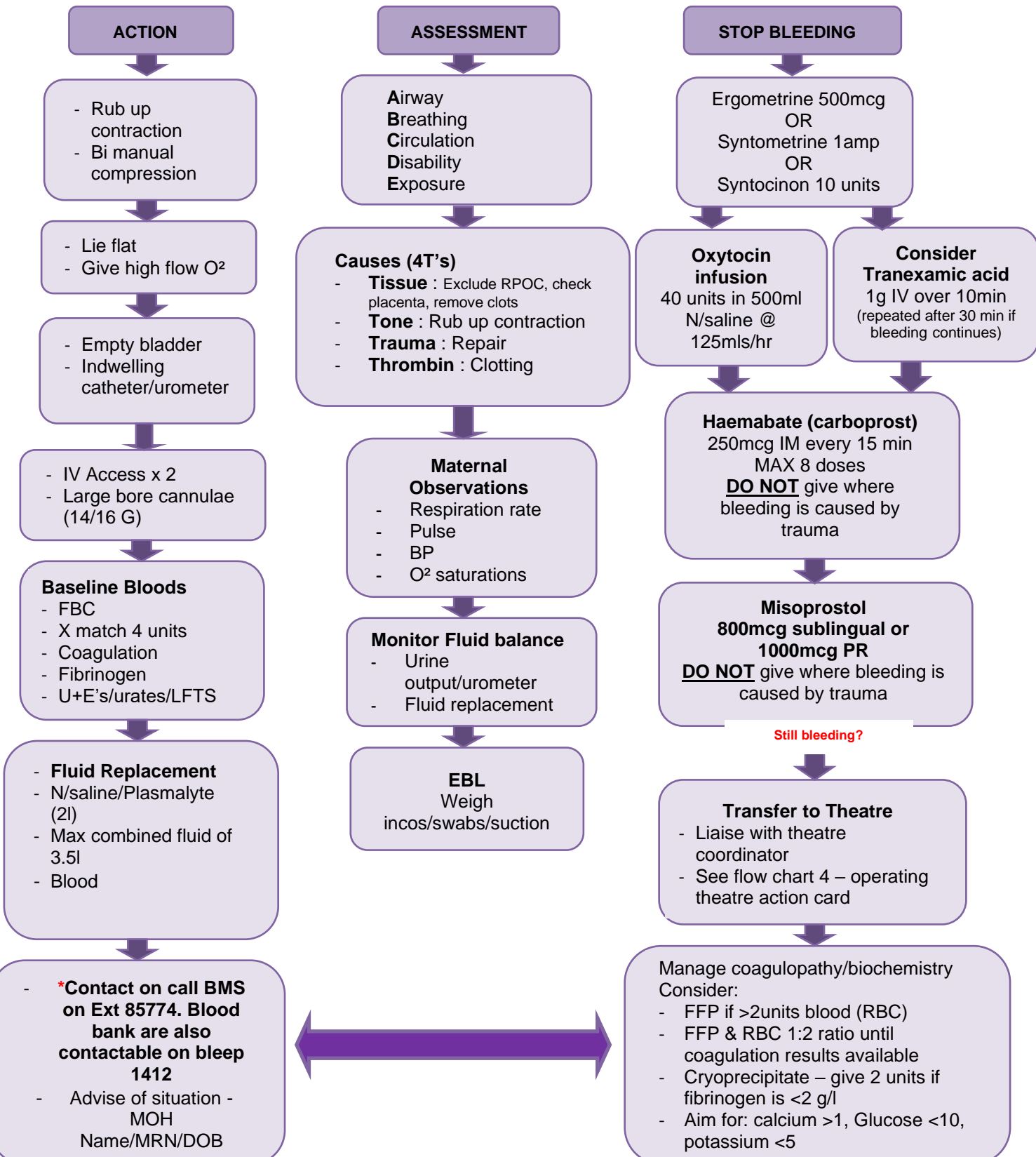
Call 2222 'obstetric emergency' – Collect Obstetric Haemorrhage Trolley

4 units of emergency O Rh(D) Negative blood is available in phase 1 theatres (opposite labour ward)



2.3 Flow Chart 3 - Major Obstetric Haemorrhage

Diagnose MOH - Revealed blood loss > 1500mls with ongoing MOH or clinical shock
Call for help 2222 - Sate 'Major obstetric Haemorrhage' (MOH)
 Obstetric Haemorrhage Trolley/Drugs /Alert theatre/ immediately ring blood bank on Ext 85774.
 Blood bank are also contactable on bleep 1412
4 units of emergency O Rh(D) Negative blood is available in phase 1 theatres (opposite labour ward)



2.3.1 Management in Theatre

See Flow Chart 4: Management of MOH – Theatre Protocol

1. Consider appropriate anaesthesia for Examination Under Anaesthetic (EUA)
2. **Failure to arrest bleeding at EUA** should be discussed with the Consultant Obstetrician who will decide whether a laparotomy is appropriate with the insertion of a Bakri Balloon, a B-Lynch suture, hysterectomy or ligation of the internal iliac artery.

Laparotomy

If the abdomen is not already open and the bleeding is continuing, a laparotomy may be needed so that surgical methods can be used in an attempt to stop the bleeding. NICE intrapartum guidelines state that no particular surgical procedure can be recommended above another in the treatment of Postpartum Haemorrhage.

B-Lynch Suture

The B lynch suture technique is simple and effective with successful outcomes. The original description of this technique requires the uterine cavity to be opened and explored and a bimanual compression test employed prior to insertion of the suture. If bimanual compression is ineffective in reducing the bleeding the B-Lynch suture is unlikely to be successful.

More recently modifications of the B-Lynch suture have been described. They all follow the principle of compressing the uterus to stop the bleeding.

Uterine packing

Uterine packing involves completely and uniformly packing the uterine cavity with mesh gauze. The pack can be inserted into a sterile plastic drape for easier removal.

Uterine balloon Tamponade

Uterine balloon tamponade (Bakri or Rusch balloon) can be used in preference to gauze packing. The balloon catheter is inserted into the uterine cavity and inflated with approximately 500ml of warm saline. An oxytocin infusion may be used to maintain uterine contraction.

This method is often described as the “tamponade test”. A ‘positive test’ (control of PPH following inflation of the balloon) indicates that laparotomy is not required, whereas a ‘negative test’ (continued PPH following inflation of the balloon) is an indication to proceed to laparotomy.

The balloon can be left in place for up to 24 hours. The balloon should ideally be removed in daylight hours when senior staff are available in case bleeding recurs.

Uterine artery embolisation (UAE)

This is a procedure where an interventional radiologist uses a catheter to deliver small particles that block the blood supply to the uterine body.

Interventional radiology can be used as a prophylactic measure where there is a known or suspected case of placenta accreta, such as placenta praevia on previous caesarean section scar, or placenta accreta diagnosed by scan/colour Doppler or magnetic resonance imaging.

Under anaesthesia (local/regional/general) a balloon catheter is introduced into the femoral artery at the groin and advanced under radiographic control into the uterine artery. Balloons can be placed in the internal iliac or uterine arteries before delivery. The balloons can be inflated to occlude the vessels in the event of postpartum haemorrhage. Embolisation can be performed via the balloon catheters if bleeding continues despite inflation. The microparticules (spheres or beads) are released which will block the vessel. Due to collateral circulation the uterus will not necrose even if both arteries are occluded. The procedure is not a surgical intervention and allows the uterus to be kept in place.

Even if hysterectomy is still required, blood loss, blood transfusion and numbers of admissions to intensive care units can be reduced.

The logistics of performing arterial occlusion or embolisation where the equipment or an interventional radiologist may not be available mean that uterine balloon tamponade (which appears to have similar efficacy) is a more appropriate first-line treatment.

If interventional radiologist is unavailable and if medical management/ balloon tamponade fails, resort to hysterectomy sooner rather than later.

Uterine vessel and internal iliac artery ligation

The uterine and internal iliac vessels can all be ligated in an attempt to stem uterine bleeding. These potentially difficult procedures and the assistance of a vascular surgeon should be requested.

Hysterectomy

Hysterectomy may be required if bleeding persists with resorting to a hysterectomy sooner rather than later especially in cases of placenta accreta or uterine rupture. A second consultant Obstetrician and Gynaecologist should be involved in the decision for hysterectomy.

Flow Chart 4: Management of MOH – Theatre Protocol

Clinical Evidence of Uncontrolled Bleeding: >1500mls or Shocked Patient Active Major Obstetric Haemorrhage Protocol
Call for HELP 2222 and state: “MAJOR OBSTETRIC HAEMORRHAGE” and immediately ring Blood Bank on Ext 85774 to supply your contact details and patient information.
Blood Bank also carry Bleep 1412.
4 units of emergency O Rh(D) Negative blood is available in phase 1 theatres (opposite labour ward)

Manage Uterine Tone

- Oxytocin 10 units
- Ergometrine 500mcg
- Syntometrine 1amp
- Oxytocin Infusion 40 units in 500mls normal saline
- Haemabate (carboprost) 250mcg IM every 15mins MAX 8 doses
- Misoprostol 800mcg sublingual or 1000mcg PR

Manage Bleeding Surgically

- EUA
- Perineal Repair
- MROP
- Rusch Balloon
- B-Lynch Suture
- Uterine Artery Embolism
- Hysterectomy

Manage Coagulopathy

Blood products

- Cryoprecipitate
- Platelets
- FFP
- RBC

Tranexamic Acid

- 1g IV over 10mins
- Repeated after 30 mins if bleeding continues

Once bleeding is controlled aim for;

- Hb >80
- Platelets >50
- Fibrinogen >2g/l

CLOSE LIAISON WITH ON CALL BMS/BLOOD BANK VIA Ext 85774
Blood Bank also carry bleep 1412
CONSIDER CONSULTANT HAEMATOLOGIST

Biochemistry

Aim for;

- Calcium >1
- Glucose <10
- Potassium <5

Adjuncts

Active Warming (Fluid warmer & Bairhugger)

Blood

- FBC, clotting studies (inc fibrinogen), U&E, LFTs, G&S/X-match

Blood Products

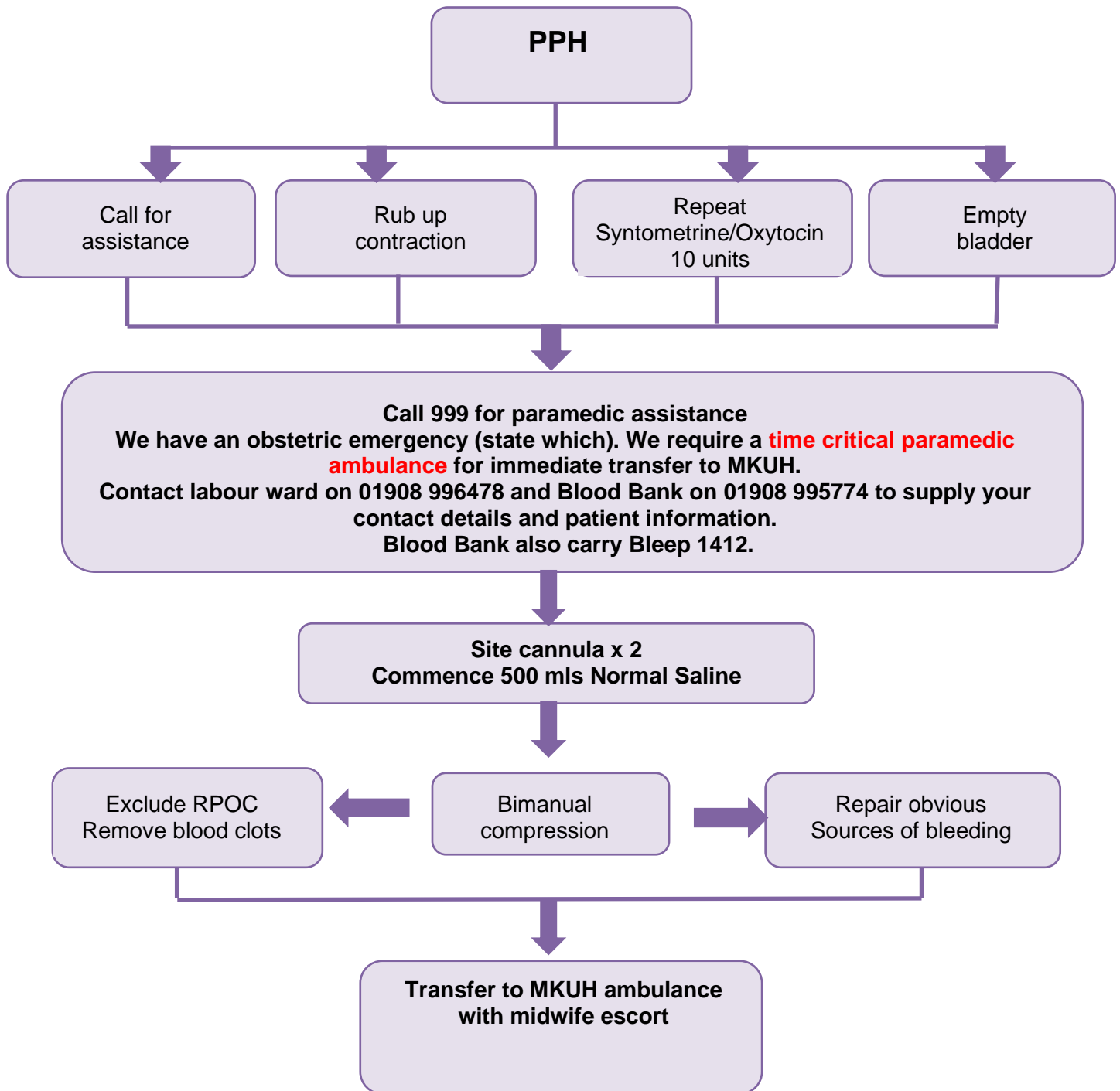
- Give FFP if >2units RBC transfused
- Give FFP+RBC in a ratio of at least 1:2 until coagulation results are available
- Cryoprecipitate give 2 units if fibrinogen is < 2g/l

This document is uncontrolled once printed. Please check on the Trust's Intranet site for the most up to date version.

©Milton Keynes University Hospital NHS Foundation Trust

2.3.2 Management of PPH in the community

Flow Chart 5: Obstetric Management of PPH in the Community



3.0 Secondary Postpartum Haemorrhage

Secondary PPH is often associated with endometritis. Where this is suspected appropriate clinical examination and a management plan should be implemented. When antibiotics are clinically indicated, a combination of ampicillin (clindamycin if penicillin allergic) and metronidazole is appropriate. In cases of endomyometritis (tender uterus) or overt sepsis, then the addition of gentamicin is recommended.

Surgical measures should be undertaken if there is excessive or continuing bleeding, irrespective of ultrasound findings.

A senior obstetrician should be involved in decisions and performance of any evacuation of retained products of conception as these women are carrying a high risk for uterine perforation.

4.0 Debriefing

Obstetric haemorrhage can be traumatic to the woman, her family and the birth attendants; therefore, debriefing is recommended by a senior member of the team who was involved at the time of events at the earliest opportunity. Women may also be referred to the Births Afterthoughts Service.

A formal follow-up meeting which analyses the case and addresses what could be done better in the future should be triggered for every significant PPH.

5.0 Documentation

Accurate documentation of a delivery with postpartum haemorrhage is essential. A structured proforma is available on Labour Ward to aid accurate record keeping. All Postpartum Haemorrhages should be notified through **Datix**.

It is important to record:

- When the emergency bell was pulled
- the staff in attendance and the time they arrived
- the sequence of events
- the time of administration of different pharmacological agents given, their timing and sequence
- the time of surgical intervention, where relevant
- the condition of the mother throughout the different steps
- the timing of the fluid and blood products given

Complete the blood bank MOH proforma and return via internal post. This step is important so that the transfusion team can analyse the provision of blood and communication processes as an improvement tool.

6.0 Skills and Drills Training

It is mandatory that all birth attendants should attend the Annual 'skill drills' training for the management of postpartum haemorrhage. Regular skills and drills are in place to ensure all members of staff know how to work together to ensure prompt and efficient treatment in such an emergency.

7.0 References

Antepartum haemorrhage. Thomsom M. Milton Keynes Hospital. Document ID: MIDW/GL/23. Available from: [http://portal.mkhospital.nhs.uk/guidelines/Trust Documentation policies guidelines patient/Maternity/Antepartum Haemorrhage.doc](http://portal.mkhospital.nhs.uk/guidelines/Trust%20Documentation%20policies%20guidelines%20patient/Maternity/Antepartum%20Haemorrhage.doc)

Milton Keynes Hospital NHS Foundation Trust (2020) Haematological Management of major Haemorrhage in Adults

Updated WHO Recommendation on Tranexamic Acid for the Treatment of Postpartum Haemorrhage Highlights and Key Messages from the World Health Organization's 2017 Global Recommendation October 2017

McDonald SJ, Abbott JM, Higgins SP. (2004) Prophylactic Ergometrine-oxytocin versus oxytocin for the third stage of labour. *Cochrane Database Systematic Review*;(1):CD000201.

PROMPT (PRactical Obstetric Multi-Professional Training) Third Edition Course Manual 2017

Alfaifel, N. and Weeks, A.D. (2012) Active management of the third stage of labour. *BMJ* [Online] **345**:e4546. Available from: <https://www.bmj.com/content/345/bmj.e4546> [Accessed 8 December 2020]

Centre for Maternal and Child Enquiries (CMACE). (2011) Saving Mothers' Lives: reviewing maternal deaths to make motherhood safer: 2006–08. The Eighth Report on Confidential Enquiries into Maternal Deaths in the United Kingdom. *BJOG* [Online] **118**(S1), pp.1–203. Available from: <https://obgyn.onlinelibrary.wiley.com/doi/abs/10.1111/j.1471-0528.2010.02847.x> [Accessed 8 December 2020]

Knight, M., et al. on behalf of MBRRACE-UK. (2014) *Saving lives, improving mothers' care - lessons learned to inform future maternity care from the UK and Ireland Confidential Enquiries into Maternal Deaths and Morbidity 2009–12*. [Online]. Available from: <https://www.npeu.ox.ac.uk/assets/downloads/mbrance-uk/reports/Saving%20Lives%20Improving%20Mothers%20Care%20report%202014%20Full.pdf> [Accessed 8 December 2020]

Knight, M., et al. on behalf of MBRRACE-UK. (2017) *Saving lives, improving mothers' care - lessons learned to inform maternity care from the UK and Ireland Confidential Enquiries into Maternal Deaths and Morbidity 2013–15*. [Online]. Available from: <https://www.npeu.ox.ac.uk/assets/downloads/mbrance-uk/reports/MBRRACE-UK%20Maternal%20Report%202017%20-%20Web.pdf> [Accessed 8 December 2020]

Knight, M., et al. on behalf of MBRRACE-UK. (2018) *Saving lives, improving mothers' care - lessons learned to inform maternity care from the UK and Ireland Confidential Enquiries into Maternal Deaths and Morbidity 2014–16*. [Online]. Available from: <https://www.npeu.ox.ac.uk/assets/downloads/mbrance-uk/reports/MBRRACE-UK%20Maternal%20Report%202018%20-%20Web%20Version.pdf> [Accessed 8 December 2020]

Knight, M., et al. on behalf of MBRRACE-UK. (2019) *Saving lives, improving mothers' care - lessons learned to inform maternity care from the UK and Ireland Confidential Enquiries into Maternal Deaths and Morbidity 2015–17*. [Online]. Available from: <https://www.npeu.ox.ac.uk/assets/downloads/mbrance-uk/reports/MBRRACE->

[UK%20Maternal%20Report%202019%20-%20WEB%20VERSION.pdf](#) [Accessed 8 December 2020]

Lewis, G. (ed) (2007) *The Confidential Enquiry into Maternal and Child Health (CEMACH). Saving Mothers' Lives: reviewing maternal deaths to make motherhood safer - 2003-2005. The Seventh Report on Confidential Enquiries into Maternal Deaths in the United Kingdom.* [Online]. Available from: <https://www.hqip.org.uk/resource/cmace-and-cemach-reports> [Accessed 8 December 2020]

National Institute for Health and Care Excellence (2014, updated 2017) *Intrapartum care for healthy women and babies.* Clinical guideline [CG190] [Online]. Available from: <https://www.nice.org.uk/guidance/cg190> [Accessed 8 December 2020]

National Institute for Health and Care Excellence (2019) *Intrapartum care for women with existing medical conditions or obstetric complications and their babies.* NICE guideline [NG121] [Online]. Available from: <https://www.nice.org.uk/guidance/ng121> [Accessed 8 December 2020]

National Patient Safety Agency (2010) *The transfusion of blood and blood components in an emergency.* Rapid Response Report. NPSA/2010/RRR017. Published 21 October 2020. [Online]. Available from: <https://www.cas.mhra.gov.uk/ViewandAcknowledgment/ViewAlert.aspx?AlertID=101475> [Accessed 8 December 2020]

Neilson, J.P. (2003) Interventions for treating placental abruption. *Cochrane Database of Systematic Reviews* 2003, Issue 1. Art. No.: CD003247. DOI: 10.1002/14651858.CD003247. Available from: <https://www.cochranelibrary.com/cdsr/doi/10.1002/14651858.CD003247/full> [Accessed 8 December 2020]

Parry Smith, W.R., et al. (2020) Uterotonic agents for first-line treatment of postpartum haemorrhage: a network meta-analysis. *Cochrane Database of Systematic Reviews* 2020, Issue 11. Art. No.: CD012754. DOI: 10.1002/14651858.CD012754.pub2. Available from: <https://www.cochranelibrary.com/cdsr/doi/10.1002/14651858.CD012754.pub2/full> [Accessed 8 December 2020]

Qureshi, H., et al. (2014) BCSH guideline for the use of anti-D immunoglobulin for the prevention of haemolytic disease of the fetus and newborn. *Transfusion Medicine* [Online] **24**(1), pp.8-20. Available from: <https://b-s-h.org.uk/guidelines/guidelines/use-of-anti-d-immunoglobulin-for-the-prevention-of-haemolytic-disease-of-the-fetus-and-newborn/> [Accessed 8 December 2020]

Royal College of Obstetricians & Gynaecologists (2011) *Antepartum haemorrhage.* Green-top Guideline No. 63. [Online]. Available from: <https://www.rcog.org.uk/en/guidelines-research-services/guidelines/gtg63/> [Accessed 8 December 2020]

Royal College of Obstetricians & Gynaecologists (2015) *Blood transfusion in obstetrics.* Green-top Guideline No. 47. 2nd ed. [Online]. Available from: <https://www.rcog.org.uk/en/guidelines-research-services/guidelines/gtg47/> [Accessed 8 December 2020]

Royal College of Obstetricians & Gynaecologists (2016) *Prevention and management of postpartum haemorrhage.* Green-top Guideline No. 52. 2nd ed. [Online]. Available from: <https://www.rcog.org.uk/en/guidelines-research-services/guidelines/gtg52/> [Accessed 8 December 2020]

Salati, J.A., et al. (2019) Prophylactic oxytocin for the third stage of labour to prevent postpartum haemorrhage. *Cochrane Database of Systematic Reviews* 2019, Issue 4. Art. No.: CD001808.

DOI: 10.1002/14651858.CD001808.pub3. Available from:

<https://www.cochranelibrary.com/cdsr/doi/10.1002/14651858.CD001808.pub3/full> [Accessed 8 December 2020]

Stainsby, D., MacLennan, S. and Hamilton, P.J. (2000) Management of massive blood loss: a template guideline. *British Journal of Anaesthesia* [Online] **85**(3), pp.487-91. Available from: <https://academic.oup.com/bja/article/85/3/487/247529> [Accessed 8 December 2020]

Guidance

Curry, N.S., et al. (2018) The use of viscoelastic haemostatic assays in the management of major bleeding: a British Society for Haematology guideline. *British Journal of Haematology* [Online] **182**(6), pp.789-806. Available from: <https://b-s-h.org.uk/guidelines/guidelines/the-use-of-viscoelastic-haemostatic-assays-in-the-management-of-major-bleeding/> [Accessed 8 December 2020]

Hunt, B.J., et al. on behalf of the British Committee for Standards in Haematology. (2015) A practical guideline for the haematological management of major haemorrhage. *British Journal of Haematology* [Online] **170**(6), pp.788-803. Available from: <https://b-s-h.org.uk/guidelines/guidelines/haematological-management-of-major-haemorrhage/> [Accessed 8 December 2020]

Cochrane Reviews

Begley, C.M., et al. (2019) Active versus expectant management for women in the third stage of labour. *Cochrane Database of Systematic Reviews* 2019, Issue 2. Art. No.: CD007412. DOI: 10.1002/14651858.CD007412.pub5. Available from: <https://www.cochranelibrary.com/cdsr/doi/10.1002/14651858.CD007412.pub5/full> [Accessed 9 December 2020]

Diaz, V., et al. (2018) Methods for blood loss estimation after vaginal birth. *Cochrane Database of Systematic Reviews* 2018, Issue 9. Art. No.: CD010980. DOI: 10.1002/14651858.CD010980.pub2. Available from: <https://www.cochranelibrary.com/cdsr/doi/10.1002/14651858.CD010980.pub2/full> [Accessed 9 December 2020]

Hofmeyr, G.J., et al. (2015) Controlled cord traction for the third stage of labour. *Cochrane Database of Systematic Reviews* 2015, Issue 1. Art. No.: CD008020. DOI: 10.1002/14651858.CD008020.pub2. Available from: <https://www.cochranelibrary.com/cdsr/doi/10.1002/14651858.CD008020.pub2/full> [Accessed 9 December 2020]

Kellie, F.J., et al. (2020) Mechanical and surgical interventions for treating primary postpartum haemorrhage. *Cochrane Database of Systematic Reviews* 2020, Issue 7. Art. No.: CD013663. DOI: 10.1002/14651858.CD013663. Available from: <https://www.cochranelibrary.com/cdsr/doi/10.1002/14651858.CD013663/full> [Accessed 9 December 2020]

Liabsuetrakul, T., et al. (2018) Prophylactic use of ergot alkaloids in the third stage of labour. *Cochrane Database of Systematic Reviews* 2018, Issue 6. Art. No.: CD005456. DOI: 10.1002/14651858.CD005456.pub3. Available from: <https://www.cochranelibrary.com/cdsr/doi/10.1002/14651858.CD005456.pub3/full> [Accessed 9 December 2020]

Oladapo, O.T., et al. (2020) Intravenous versus intramuscular prophylactic oxytocin for reducing blood loss in the third stage of labour. *Cochrane Database of Systematic Reviews* 2020, Issue 11. Art. No.: CD009332. DOI: 10.1002/14651858.CD009332.pub4. Available from: <https://www.cochranelibrary.com/cdsr/doi/10.1002/14651858.CD009332.pub4/full> [Accessed 9 December 2020]

Shakur, H., et al. (2018) Antifibrinolytic drugs for treating primary postpartum haemorrhage. *Cochrane Database of Systematic Reviews* 2018, Issue 2. Art. No.: CD012964. DOI: 10.1002/14651858.CD012964. Available from: <https://www.cochranelibrary.com/cdsr/doi/10.1002/14651858.CD012964/full> [Accessed 9 December 2020]

Review articles

Brenner, A., et al. (2019) Tranexamic acid for post-partum haemorrhage: what, who and when. *Best Practice & Research: Clinical Obstetrics & Gynaecology* [Online] **61**, pp.66-74. Available from: <https://www.clinicalkey.com/#!/content/journal/1-s2.0-S1521693419300410> [Accessed 10 December 2020]

Carvalho Pacagnella, R. and Borovac-Pinheiro, A. (2019) Assessing and managing hypovolemic shock in puerperal women. *Best Practice & Research: Clinical Obstetrics & Gynaecology* [Online] **61**, pp.89-105. Available from: <https://www.clinicalkey.com/#!/content/journal/1-s2.0-S1521693419300574> [Accessed 10 December 2020]

Collins, P.W., et al. (2019) Management of postpartum haemorrhage: from research into practice, a narrative review of the literature and the Cardiff experience. *International Journal of Obstetric Anesthesia* [Online] **37**, pp.106-117. Available from: <https://www.clinicalkey.com/#!/content/playContent/1-s2.0-S0959289X18301821> [Accessed 10 December 2020]

Cooper, N., O'Brien, S. and Siassakos, D. (2019) Training health workers to prevent and manage post-partum haemorrhage (PPH). *Best Practice & Research: Clinical Obstetrics & Gynaecology* [Online] **61**, pp.121-9. Available from: <https://www.clinicalkey.com/#!/content/journal/1-s2.0-S1521693419300537> [Accessed 10 December 2020]

Finlayson, K., et al. (2019) What matters to women and healthcare providers in relation to interventions for the prevention of postpartum haemorrhage: A qualitative systematic review. *PLoS One* [Online] **14**(5):e0215919. Available from: <https://journals.plos.org/plosone/article?id=10.1371/journal.pone.0215919> [Accessed 9 December 2020]

Gallos, I., et al. (2019) Uterotonic drugs to prevent postpartum haemorrhage: a network meta-analysis. *Health Technology Assessment* [Online] **23**(9). Available from: <https://www.journalslibrary.nihr.ac.uk/hta/hta23090/#/abstract> [Accessed 9 December 2020]

Hancock, A., Weeks, A.D. and Lavender, T. (2019) Assessing blood loss in clinical practice. *Best Practice & Research: Clinical Obstetrics & Gynaecology* [Online] **61**, pp.28-40. Available from: <https://www.clinicalkey.com/#!/content/journal/1-s2.0-S1521693419300409> [Accessed 10 December 2020]

McNamara, H. and Mallaiah, S. (2019) Managing coagulopathy following PPH. *Best Practice & Research: Clinical Obstetrics & Gynaecology* [Online] **61**, pp.106-120. Available from:

<https://www.clinicalkey.com/#!/content/journal/1-s2.0-S1521693419300380> [Accessed 10 December 2020]

Neary, C., et al. (2020) Predicting risk of postpartum haemorrhage: a systematic review. *BJOG* [Online] Published online 23 June 2020. Available from:

<https://obgyn.onlinelibrary.wiley.com/doi/full/10.1111/1471-0528.16379> [Accessed 9 December 2020]

Onwochei, D.N., et al. (2019) Carbetocin reduces the need for additional uterotonics in elective caesarean delivery: a systematic review, meta-analysis and trial sequential analysis of randomised controlled trials. *International Journal of Obstetric Anesthesia* [Online] **40**, pp.14-23. Available from: <https://www.clinicalkey.com/#!/content/playContent/1-s2.0-S0959289X19302948> [Accessed 10 December 2020]

Surbek, D., et al. (2020) Patient blood management (PBM) in pregnancy and childbirth: literature review and expert opinion. *Archives of Gynecology and Obstetrics* [Online] **301**(2), pp.627-641. Available from: <https://www.ncbi.nlm.nih.gov/pmc/articles/PMC7033066/> [Accessed 10 December 2020]

Varouxaki, N., et al. (2018) Antepartum haemorrhage. *Obstetrics, Gynaecology and Reproductive Medicine* [Online] **28**(8), pp.237-242. Available from:

<https://www.clinicalkey.com/#!/content/journal/1-s2.0-S1751721418301088> [Accessed 10 December 2020]

Vogel, J.P., et al. (2019) WHO recommendations on uterotonics for postpartum haemorrhage prevention: what works, and which one? *BMJ Global Health* [Online] **4**(2):e001466. Available from: <http://europepmc.org/article/MED/31139461> [Accessed 10 December 2020]

Weeks, A.D. and Fawcus, S. (2020) Management of the third stage of labour. *Best Practice & Research: Clinical Obstetrics & Gynaecology* [Online] **67**, pp.65-79. Available from:

<https://www.clinicalkey.com/#!/content/playContent/1-s2.0-S1521693420300444> [Accessed 10 December 2020]

Studies

Adnan N., et al. (2018) Intramuscular versus intravenous oxytocin to prevent postpartum haemorrhage at vaginal delivery: randomised controlled trial. *BMJ* [Online] **362**:k3546. Available from: <https://www.bmj.com/content/362/bmj.k3546> [Accessed 8 December 2020]

Bell, S.F., et al. (2020) Designing and implementing an all Wales postpartum haemorrhage quality improvement project: OBS Cymru (the Obstetric Bleeding Strategy for Wales). *BMJ Open Quality* [Online] **9**:e000854. Available from:

<https://bmjopenquality.bmj.com/content/bmjgir/9/2/e000854.full.pdf> [Accessed 10 December 2020]

Bell, S.F., et al. (2020) Incidence of postpartum haemorrhage defined by quantitative blood loss measurement: a national cohort. *BMC Pregnancy and Childbirth* [Online] **20**(271). Available from:

<https://bmcpregnancychildbirth.biomedcentral.com/articles/10.1186/s12884-020-02971-3> [Accessed 10 December 2020]

Van der Nelson, H., et al. (2019) Intramuscular oxytocin versus oxytocin/ergometrine versus carbetocin for prevention of primary postpartum haemorrhage after vaginal birth: study protocol for a randomised controlled trial (the IMox study). *Trials* [Online] **20**(4). Available from:

<https://trialsjournal.biomedcentral.com/articles/10.1186/s13063-018-3109-2> [Accessed 10 December 2020]

Widmer, M., et al. for the WHO CHAMPION Trial Group (2018) Heat-stable carbetocin versus oxytocin to prevent hemorrhage after vaginal birth. *New England Journal of Medicine* [Online] **379**(8), pp.743-752. Available from: <https://www.nejm.org/doi/full/10.1056/nejmoa1805489> [Accessed 10 December 2020]

WOMAN Trial Collaborators (2017) Effect of early tranexamic acid administration on mortality, hysterectomy, and other morbidities in women with post-partum haemorrhage (WOMAN): an international, randomised, double-blind, placebo-controlled trial. *The Lancet* [Online] **389**(10084), pp.2105-2116. Available from: [https://www.thelancet.com/journals/lancet/article/PIIS0140-6736\(17\)30638-4/fulltext](https://www.thelancet.com/journals/lancet/article/PIIS0140-6736(17)30638-4/fulltext) [Accessed 8 December 2020]

8.0 Governance

8.1 Document review history

| Version number | Review date | Reviewed by | Changes made |
|----------------|-------------|---|--|
| 3 | 12/2017 | | Reviewed and updated |
| 4 | 12/2020 | Julie Cooper/Terrie Perry/Caroline Lowe | Complete review |
| 4.1 | 01/2021 | Swati Velankar | Paragraph added on page 8 |
| 4.2 | 03/2021 | Eleanor Tyagi | Amendment-TXA to be repeated after 30 minutes page 15,18 and 21 |
| 4.3 | 04/2021 | PPH review group | PPH risk assessment tool added- Appendix 5. |
| 4.4 | 04/2021 | Terrie Perry/Caroline Lowe/Swati Velankar | Referenced 3 further guidelines. Agreed wording on use of Kleihauer test, reinstated banner headers on Flow Charts 2 and 3 |

8.2 Consultation History

| Stakeholders Name/Board | Area of Expertise | Date Sent | Date Received | Comments | Endorsed Yes/No |
|-------------------------|-------------------------------------|-----------|---------------|-------------------|-----------------|
| Julie Cooper | Head of Midwifery | 24.8.20 | 24.8.20 | | Yes |
| Janice Styles | Midwifery Matron | 24.8.20 | 24.8.20 | | Yes |
| Erum Khan | Obstetric Consultant | 24.8.20 | 24.8.20 | | Yes |
| Caroline Lowe | Specialist Transfusion Practitioner | 24.8.20 | 24.8.20 | Comments received | Yes |

This document is uncontrolled once printed. Please check on the Trust's Intranet site for the most up to date version.

©Milton Keynes University Hospital NHS Foundation Trust

| | | | | | |
|-------------------------|--------------------------------------|----------|----------|-------------------|-----|
| Terrie Perry | Specialist Transfusion Practitioner | 24.8.20 | 24.8.20 | Comments received | Yes |
| Jasmine MBeHarry | Blood Transfusion Laboratory Manager | 24.8.20 | 24.8.20 | Comments Received | Yes |
| Women's Guideline Group | W&C | 23/12/20 | 23/12/20 | Comments received | Yes |

8.3 Audit and monitoring

This Guideline outlines the process for document development will be monitored on an ongoing basis. The centralisation of the process for development of documents will enable the Trust to audit more effectively. The centralisation in recording documents onto a Quality Management database will ensure the process is robust.

| Audit/Monitoring Criteria | Tool | Audit Lead | Frequency of Audit | Responsible Committee/Board |
|---|---------------------------|--|---|---|
| Number of Women having APH | Stats | Will be nominated by maternity audit leads | Annually Maternity Clinical Governance Board Maternity CIG | Maternity CIG Risk Meetings |
| Appropriate communication including escalation | Tool designed by auditors | Will be nominated by maternity audit leads | All maternity records with a blood loss of greater than 2500mls | Maternity CIG Risk Meetings |
| a) Numbers of women having PPH >1000ml b) Numbers of women receiving blood transfusion following PPH c) Numbers of women requiring surgical intervention for PPH d) Numbers of women requiring postpartum hysterectomy | Continuous audit | Risk midwife | Monthly – Maternity CIG, Quarterly – Maternity Clinical Governance Board | Maternity CIG, Maternity Clinical Governance Board |

8.4 Equality Impact Assessment

As part of its development, this Guideline and its impact on equality has been reviewed. The purpose of the assessment is to minimise and if possible remove any disproportionate impact on the grounds of race, gender, disability, age, sexual orientation, religion or belief, pregnancy and maternity, gender reassignment or marriage and civil partnership. No detriment was identified. Equality Impact assessments will show any future actions required to overcome any identified barriers or discriminatory practice.

| Equality Impact Assessment | | | |
|--|---------------------|--|------------------|
| Division | Women and children | Department | Maternity |
| Person completing the EqIA | Erica Puri | Contact No. | 87153 |
| Others involved: | Yes | Date of assessment: | 04/2021 |
| Existing policy/service | Yes | New policy/service | No |
| Will patients, carers, the public or staff be affected by the policy/service? | | Yes | |
| If staff, how many/which groups will be affected? | | All staff | |
| Protected characteristic | Any impact? | Comments | |
| Age | NO | Positive impact as the policy aims to recognise diversity, promote inclusion and fair treatment for patients and staff | |
| Disability | NO | | |
| Gender reassignment | NO | | |
| Marriage and civil partnership | NO | | |
| Pregnancy and maternity | NO | | |
| Race | NO | | |
| Religion or belief | NO | | |
| Sex | NO | | |
| Sexual orientation | NO | | |
| What consultation method(s) have you carried out? | | | |
| <i>meetings</i> | | | |
| How are the changes/amendments to the policies/services communicated? | | | |
| <i>email, meetings</i> | | | |
| What future actions need to be taken to overcome any barriers or discrimination? | | | |
| What? | Who will lead this? | Date of completion | Resources needed |
| | | | |
| | | | |
| | | | |
| Review date of EqIA | 12/2023 | | |

Appendix 1: Acute Major Blood Loss – A Template Guideline

| Goal | Procedure | Comments |
|---|---|---|
| Contact key personnel | <ul style="list-style-type: none"> Consultant clinician in charge Duty consultant anaesthetist Blood transfusion biomedical scientist Duty consultant haematologist Labour Ward Co-ordinator | <ul style="list-style-type: none"> A named senior person must take responsibility for communication and documentation Arrange Intensive Care Unit bed |
| Restore circulating volume Average adult blood volume is 5L (70 mls/kg) | <ul style="list-style-type: none"> Insert wide bore peripheral or central cannula Give pre-warmed crystalloid or colloid as needed Avoid hypotension or urine output <0.5 ml/kg/h | <ul style="list-style-type: none"> 14 gauge Monitor central venous pressure Keep patient warm Concealed blood loss is often underestimated |
| Arrest bleeding | <ul style="list-style-type: none"> Early surgical or obstetric intervention Interventional radiology | |
| Request laboratory investigations | <ul style="list-style-type: none"> FBC, PT, APTT, Thrombin time, Fibrinogen (Clauss method); blood bank sample, biochemical profile, blood gases and pulse oximetry Ensure correct sample identification Repeat tests after blood component infusion | <ul style="list-style-type: none"> Results may be affected by colloid infusion. Ensure correct patient identification May need to give components before results available |
| Maintain Hb >80 g/l | <ul style="list-style-type: none"> Assess degree of urgency Give red cells: Group O Rh D negative In extreme emergency Until ABO and Rh D groups known ABO group specific when blood group known Fully compatible blood Time permitting Use blood warmer and/or rapid infusion device if flow rate >50 ml/kg/h in adult | <ul style="list-style-type: none"> Further serological crossmatch not required after 1 blood volume replacement. Transfusion laboratory will complete crossmatch after issue |
| Maintain platelet count >50 x 10⁹/l | <ul style="list-style-type: none"> Allow for delivery time from blood centre (minimum 60 mins). Blood Bank keep one platelet unit in stock for emergency use Platelet support after 1-1.5l blood volume replacement and continued resuscitation. | <ul style="list-style-type: none"> Order at 75 to allow margin of safety to ensure platelet count >50 x 10⁹/l Keep platelet count >100 x 10⁹/l if multiple or CNS trauma or if platelet function abnormal |
| Maintain PT & APTT <1.5 x mean control | <ul style="list-style-type: none"> Give FFP 15-20 ml/kg (four units for an adult) guided by tests Anticipate the need for FFP after 2 red cells Available within a maximum of 30 minutes. | <ul style="list-style-type: none"> PT/APTT > 1.5 x mean normal value correlates with increased microvascular bleeding Keep 32onized Ca²⁺ > 1.13 mmol/l |
| Maintain Fibrinogen >2.0 g/l | <ul style="list-style-type: none"> If not corrected by FFP give cryoprecipitate (two packs of cryoprecipitate for an adult) Available within 30 minutes. | <ul style="list-style-type: none"> Cryoprecipitate rarely needed except in DIC |
| Avoid DIC | <ul style="list-style-type: none"> Treat underlying cause (shock, hypothermia, acidosis) | <ul style="list-style-type: none"> Although rare, mortality is high |
| Consider use Antifibrinolytic drugs | <ul style="list-style-type: none"> Aprotinin/tranexamic acid | <ul style="list-style-type: none"> If uncontrollable bleeding |
| Consider use of rVIIa | <ul style="list-style-type: none"> Consultant to consultant referral | <ul style="list-style-type: none"> If uncontrollable bleeding |

Appendix 2: Major Haemorrhage Proforma

Patient Sticker

Date: **Time:**
EBL to date:
Started by:

| Team Member | Name of Attending Staff | Time called | Time arrived |
|---------------------------------------|-------------------------|-------------|--------------|
| On call Obstetric Consultant | | | |
| On call Obstetric SpR | | | |
| On call Obstetric SHO | | | |
| On call Anaesthetic Consultant | | | |
| Blood Bank (on call BMS) | | | |
| On call Anaesthetic SpR | | | |
| Senior Midwife | | | |
| ODP | | | |
| Consultant Haematologist | | | |
| Porter (if required to collect blood) | | | |

| Observations | | | |
|--------------|-------|-----|-------|
| Time | Pulse | B/P | Resps |
| | | | |
| | | | |
| | | | |
| | | | |
| | | | |
| | | | |
| | | | |
| | | | |
| | | | |
| | | | |

| Drug | Dose | Time |
|-----------------------|------------------------------|------|
| Syntometrine | 1 amp IM | |
| Ergometrine | 500 mcg IM/IV (if normal BP) | |
| Syntocinon | 40 units in 500 mls N/Saline | |
| Tranexamic Acid | 1g IV over 10min | |
| Hemabate(Carboprost) | 250 mcg/1 amp IM | |
| Hemabate(Carboprost) | 250 mcg/1 amp IM | |
| Hemabate (Carboprost) | 250 mcg/1 amp IM | |
| Hemabate(Carboprost) | 250 mcg/1 amp IM | |
| Hemabate(Carboprost) | 250 mcg/1 amp IM | |
| Hemabate(Carboprost) | 250 mcg/1 amp IM | |
| Hemabate(Carboprost) | 250 mcg/1 amp IM | |
| Hemabate(Carboprost) | 250 mcg/1 amp IM | |
| Hemabate(Carboprost) | 250 mcg/1 amp IM | |
| Misoprostol | 200 mcg x 5 tablets PR | |
| | | |
| | | |
| | | |

EBL:

| | | |
|------------------------------------|------------|-----------|
| Need to transfer to theatre | Yes | No |
| EUA | Yes | No |
| Balloon tamponade | Yes | No |
| Surgery (see main notes) | Yes | No |

Blood Products

| Red Cells | Pack numbers | Volume | Time |
|-----------|--------------|--------|------|
| 1. | | | |
| 2. | | | |
| 3. | | | |
| 4. | | | |
| 5. | | | |
| 6. | | | |
| 7. | | | |
| 8. | | | |
| 9. | | | |
| 10. | | | |

| FFP | Pack numbers | Volume | Time |
|-----|--------------|--------|------|
| 1. | | | |
| 2. | | | |
| 3. | | | |
| 4. | | | |
| 5. | | | |
| 6. | | | |
| 7. | | | |
| 8. | | | |
| 9. | | | |
| 10. | | | |

| Platelets | Pack numbers | Volume | Time |
|-----------|--------------|--------|------|
| 1. | | | |
| 2. | | | |
| 3. | | | |
| 4. | | | |
| 5. | | | |
| 6. | | | |

| Cryoprecipitate | Pack Number | Volume | Time |
|-----------------|-------------|--------|------|
| 1. | | | |
| 2. | | | |
| 3. | | | |
| 4. | | | |
| 5. | | | |
| 6. | | | |

| Factor VIIa | Pack Number | Volume | Time |
|-------------|-------------|--------|------|
| 1. | | | |
| 2. | | | |
| 3. | | | |
| 4. | | | |
| 5. | | | |
| 6. | | | |

This document is uncontrolled once printed. Please check on the Trust's Intranet site for the most up to date version.
©Milton Keynes University Hospital NHS Foundation Trust

Blood Loss

| Time | Amount | Running Total |
|------|--------|---------------|
| | | |
| | | |
| | | |
| | | |
| | | |
| | | |
| | | |
| | | |
| | | |
| | | |
| | | |
| | | |
| | | |
| | | |
| | | |
| | | |
| | | |
| | | |
| | | |
| | | |
| | | |
| | | |
| | | |
| | | |
| | | |
| | | |
| | | |
| | | |
| | | |
| | | |
| | | |
| | | |
| | | |
| | | |
| | | |
| | | |

Obstetric Emergency “Stepped down” (ensure on-call BMS is contacted (Ext 85774 or bleep 1412)

Name of Clinician
Date
Time
Signature

Appendix 3: Transfusion Team Processes

What to send and when

Send group and save sample on all women

Send group and save sample and request 2 units of RBC on all women with an identified risk factor

Any women with positive antibody screen discuss with blood bank and consider cross-matching

Baseline Bloods

FBC, clotting studies including fibrinogen

Group and save/crossmatch sample (if no current sample available)

Communicate with Blood Bank

Phone Ext 85774 or bleep 1412 to confirm sample availability and requirements as early as possible

Initial PPH

Send a group and save sample FBC, clotting sample including Fibrinogen

Follow up phone call or bleep blood bank to make them aware of urgency of Group and Save

Continued PPH

Request 4 units crossmatched blood

Send FBC and clotting screen including fibrinogen

Follow up phone call or bleep blood bank to make them aware of the urgency of the crossmatch

Major Obstetric Haemorrhage (MOH)

4 units of emergency O Rh(D) Negative blood is available in phase 1 (opposite labour ward) theatre fridge. If women have antibodies, CHECK with Blood Bank before transfusion.

Activate Major haemorrhage protocol Dial 2222 and immediately ring blood bank

Midwife coordinator or designated other to call blood bank on Ext 85774 or bleep blood bank on 1412 and use the phrase Major Obstetric Haemorrhage. This will release:

- 4 units of RBC (Blood bank will issue emergency O negative blood if crossmatched or group specific blood is not available).
- Blood will be collected by the porters in a blood transport box
- Send group and save sample if requested by blood bank and FBC, clotting screen (including fibrinogen) if not already done
- If Major Haemorrhage box 2 is requested 4 units of fresh frozen plasma (FFP) will be thawed. FFP will take a maximum of 30 minutes to thaw and issue.

When the MOH is called, the blood bank would issue the first "pack" of 4 units of red cells. Pack 2 contains 4 units of red cells, 4 FFP and platelets as requested. Subsequent "packs" will contain FFP, Cryoprecipitate as required or platelets in addition to the red cells, until Blood bank are told to stand down.

Availability of Blood components

Immediately

RBC

O RH D negative blood (2 units) is appropriate to use if crossmatched or group specific blood is not available, and transfusion indicated urgently. Please make blood bank aware on Bleep 1412

Clinical area **must** contact blood bank on bleep 1412 prior to use if mum has blood group antibodies to ascertain suitability for use.

Located in Fridge Phase 1 theatre (4 x O Negative)

Within 10 minutes

Electronically issued blood if a suitable sample is available and has been processed by the lab and if mum has no blood group antibodies

Clinical area to advise how many units required (normally 4) Major Haemorrhage pack 1.

Within 45 minutes

In circumstances where no suitable samples are available in the laboratory and no historical group is on the blood bank system, 2 group and save samples must be sent to blood bank

Fully crossed matched blood providing mum has not got any blood group antibodies

(Approximately 45 minutes)

Fresh Frozen plasma (FFP)

If Box 2 is requested Give FFP and red cells in a ratio of 1:2 until laboratory results are available. Available for collection from blood issue room within a maximum of 30 minutes from activation of MOH of box 2 being requested

Continue to give FFP and red cells in a ratio of at least 1:2 until coagulation results are available. Further plasma should be guided by coagulation results.

Platelets

Normally available immediately

Request when platelet count falls below 75

Give if count falls below 50

Note; it is acceptable to use ABO incompatible platelets negative for high titre agglutinins in the management of patients with Major haemorrhage. RhD negative platelets should be used for females less than 51 years of age with an unknown group

Cryoprecipitate

Give 2 units if Fibrinogen is <2g/l

If bleeding continues and results are not available, do not delay cryoprecipitate supplementation if required

Allow 20-25 minutes for cryoprecipitate to be thawed and made available

Note: Do not refrigerate cryoprecipitate, it must be used within 4 hours of thawing and returned to blood bank for disposal if not used

*Obtain advice from the on call Haematology consultant via switchboard on clotting results and blood component replacement if bleeding continues despite receiving RBC, FFP, platelets and cryoprecipitate

Alert blood bank when MOH over.

This document is uncontrolled once printed. Please check on the Trust's Intranet site for the most up to date version.

©Milton Keynes University Hospital NHS Foundation Trust

Return any unused blood components to blood bank and inform BMS in blood bank.

Complete all traceability slips.

Refer to Major Haemorrhage guideline for further information.

This document is uncontrolled once printed. Please check on the Trust's Intranet site for the most up to date version.

©Milton Keynes University Hospital NHS Foundation Trust

Appendix 4: PPH Proforma

PPH Proforma

Patients name:MRN:

Drill: Yes No

Assigned Midwife:.....Date:.....Time haemorrhage commenced:.....

2222 OBSTETRIC EMERGENCY Time of call.....

| Called for help | Name | Time called | Time arrived |
|--|------|-------------|--------------|
| On call BMS – fast bleep 1412 or call Ext 85774. The blood bank will need a name and number for contact and updates | | | |
| Senior Midwife | | | |
| Registrar | | | |
| SHO | | | |
| Anaesthetist | | | |
| ODP | | | |
| Consultant Obstetrician | | | |
| Scribe | | | |
| Haematologist | | | |
| Others (Please list) | | | |

| | Yes | Performed by | Time performed |
|----------------------------|-----|--------------|----------------|
| Laid flat | | | |
| Oxygen administered | | | |
| Ventilation required | | | |
| IV access 2 x 16g venflons | | | |

BLOODS TAKEN:

FBC G&S Clotting U&E LFT
Xmatch Number of units..... Kleihauer

| MANAGEMENT | | | | | | | |
|---|--------|--------------|--|--|--|------------|----------------|
| | Yes | Performed by | | | | | Time performed |
| Placenta & membranes removed | | | | | | | |
| Rub up a contraction | | | | | | | |
| Indwelling catheter inserted | | | | | | | |
| Placenta & membranes complete | | | | | | | |
| Perineal trauma identified | | | | | | | |
| Blood clotting on bed/floor | | | | | | | |
| Bimanual compression | | | | | | | |
| DRUGS | | | | | | | |
| | Yes | Given by | | | | | Time given |
| Syntometrine 1amp IM (1 st dose) | | | | | | | |
| Ergometrine 500mcg IV/IM | | | | | | | |
| Oxytocin 10 units IM (if BP high) | | | | | | | |
| Syntocinon IV infusion 40 units in 500ml Normal Saline 125ml/hr | | | | | | | |
| Tranexamic Acid 1g IV over 10 minutes | | | | | | | |
| Haemobate 250mcg IM (max 8 doses every 15 mins) | | | | | | | |
| Misoprostol 800mcg sublingual or 1000mcg PR | | | | | | | |
| OBSERVATIONS | | | | | | | |
| Time | | | | | | | |
| BP | | | | | | | |
| Pulse | | | | | | | |
| Oxygen sats | | | | | | | |
| Resp rate | | | | | | | |
| IV FLUIDS/BLOOD | | | | | | | |
| Specify | Volume | Given by | | | | Time given | |
| | | | | | | | |
| | | | | | | | |
| | | | | | | | |
| | | | | | | | |

Time transferred to theatre:..... Major Haemorrhage Policy activated:.....Total EBL.....

Datix form completed by:.....Datix number.....Document and Debrief: Yes No

This document is uncontrolled once printed. Please check on the Trust's Intranet site for the most up to date version.

©Milton Keynes University Hospital NHS Foundation Trust

Appendix 5: PPH Risk Assessment

PPH Risk Assessment

To be completed on admission in labour, prior to second stage and following delivery for all women

Addressograph

Date.....

| Antenatal | Score | Individual Score |
|---|-------|------------------|
| Placenta Praevia/Accreta | 10 | |
| Placental Abruption – significant | 10 | |
| Multiple Pregnancy | 6 | |
| Current Hb<85 | 6 | |
| Intrauterine death | 2 | |
| Pre-eclampsia / gestational hypertension | 4 | |
| Maternal Clotting Disorder | 3 | |
| Previous history of PPH /MOH or retained placenta | 3 | |
| Parity >4 | 3 | |
| Parity ≥ 6 | 6 | |
| BMI ≥ 40 | 2 | |
| Uterine Fibroids | 2 | |
| Recurrent APH (minor) | 2 | |
| Elective caesarean Section/ Recurrent Caesarean Section | 2 | |
| Total | | |
| Intrapartum Risk Factors | | |
| Induction of labour / Augmentation of labour | 2 | |
| Sepsis / Pyrexia in labour | 2 | |
| Prolonged 1 st stage of labour > 12 hours (active) | 2 | |
| >12 hours of Syntocinon | 2 | |
| Prolonged 2 nd stage of labour > 4 hours | 2 | |
| Total | | |
| Total Antenatal and Intrapartum Score | | |
| Postnatal Risk Factors | | |
| Retained Placenta | 6 | |
| Emergency Caesarean Section | 6 | |
| Baby >4 kg | 2 | |
| Operative vaginal Delivery | 2 | |
| Total | | |
| Total Antenatal plus Intrapartum plus Postnatal Risk Score | | |

| Management for third stage and following birth. Alternative plans must be documented in eCare | | |
|--|--|--|
| Score 1-5 | Score 6-9 | Score 10 or more |
| <p>Oxytocin 10iu IM with delivery of the anterior shoulder or as soon as possible before the cord is clamped and cut (do not wait for delayed cord clamping)</p> <p>Measure all blood loss</p> <p>Routine maternal postnatal observations</p> <p>Consider physiological mgt at maternal request if appropriate</p> | <p>Follow green actions PLUS</p> <p>IV access, grey cannula (16g)</p> <p>Group and Save, FBC</p> <p>Oxytocin infusion, 40iu in 500mls in Normal Saline at 125mls per hour</p> | <p>Follow Amber actions PLUS</p> <p>Second Grey Cannula (16g)</p> <p>Cross match 2 units of blood</p> |
| <p>On recognition of PPH commence MEOWS</p> <p>Maternal observations at least every 30 minutes for 2 hours</p> <p>Activate early use of PPH protocol:</p> <p>TXA 1gm IV / Ergometrine 500mcg IM/IV / Haemabate 250mcg / Misoprostol 800 mcg sublingual or 1000mcg PR</p> | | |