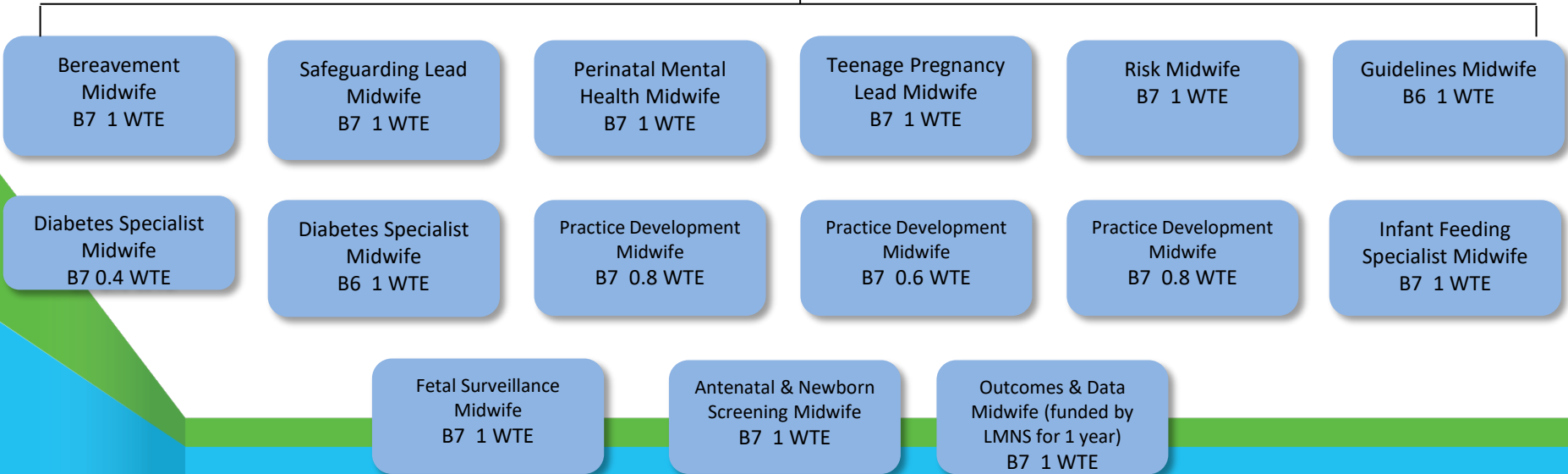
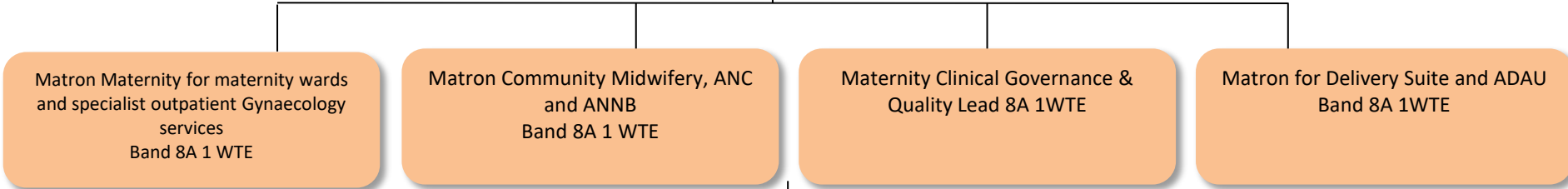


MATERNITY

Head of Midwifery – Band 8C 1 WTE Reports to Chief Nurse
Interim Deputy Head of Midwifery Band 8B 1 WTE
Consultant Midwife 8b 1WTE



As a teaching hospital, we conduct education and research to improve healthcare for our patients. During your visit students may be involved in your care, or you may be asked to participate in a clinical trial. Please speak to your doctor or nurse if you have any concerns.

Chief Executive: Joe Harrison
 Chairman: Simon Lloyd