

Bereavement Information For relatives or friends

Contains essential information



This Is Your Car Parking Permit

At this time, we wish to convey our deepest sympathy

The aim of this booklet is to give you support and guidance at what is a very difficult time.

Bereavement is something which all people experience at some time in their lives and can leave you feeling all sorts of emotions.

The hospital **Bereavement Service** will support you through the processes outlined in this book. Please contact them on 01908 996155/996154.

If you would like to speak to a **Hospital Chaplain** you can do this via the hospital switchboard on 01908 660033 24 hours a day, 7 days a week. You may want to feel connected to your faith community, or simply to have someone to listen to you at this very difficult time.

At the back of the booklet is a contact list and a checklist to help you organise arrangements. It may be useful to get other members of the family or a friend to make some calls for you.

If you have any comments about the end-of-life care your relative received, please let us know or contact the Patient Advice and Liaison Service (PALS), we will give you a booklet about this.

Car Parking for the Bereavement Service

Please bring this yellow booklet with you if you are coming either to the bereavement office or for a viewing. It is your parking permit and needs to be placed in view on your dashboard to ensure you do not receive a parking ticket/fine. We have allocated spaces, so please follow these directions.

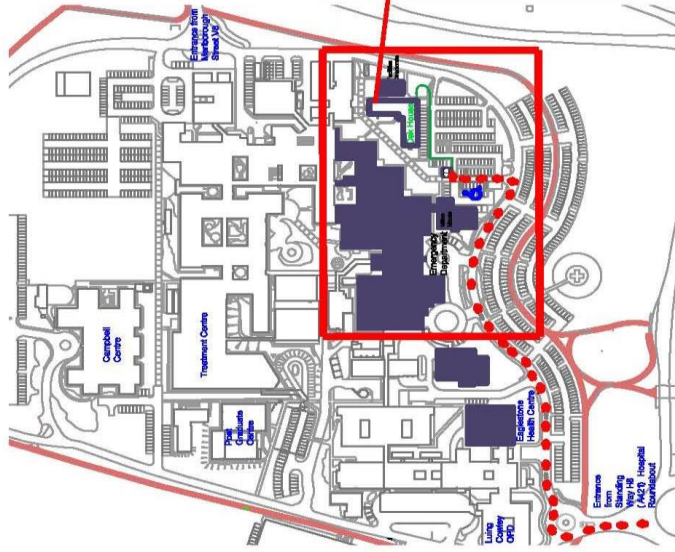
- Enter the Hospital site from Standing Way
- Turn right at the roundabout, go passed the Emergency Department on the left.
- Turn into Car Park A Disabled on your left-hand side.
- There are two allocated spaces for the Bereavement Service (Green and White signage).

Please refer to the map for your directions.

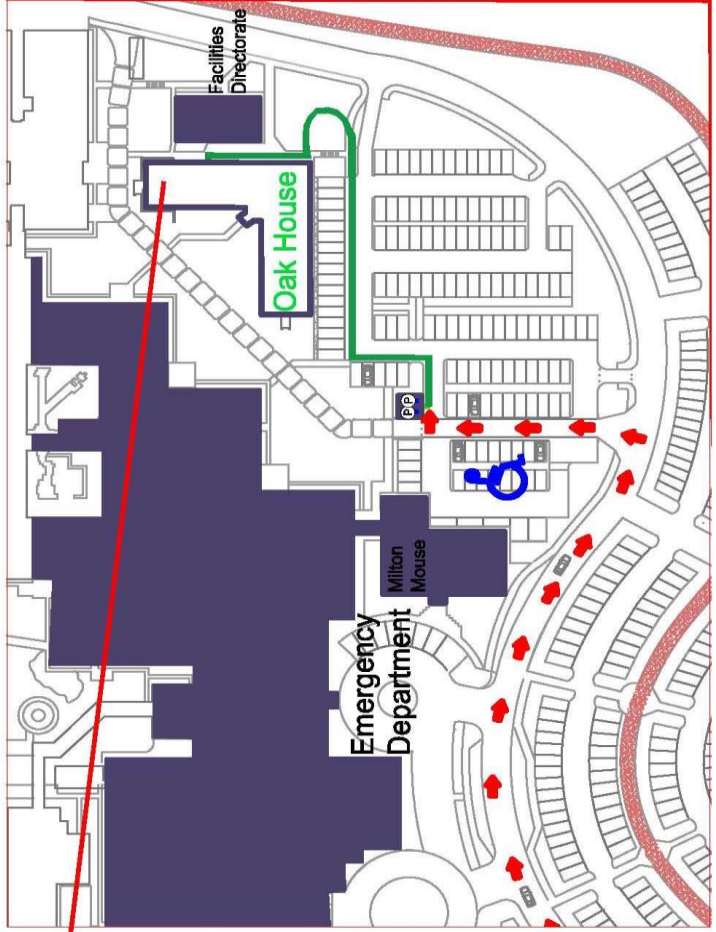
If you are coming for a viewing please park as above and stay in your car and we will meet you. We will confirm this when booking a viewing time, especially if you are coming by taxi.



Milton Keynes
University Hospital
NHS Foundation Trust



Enlarged Section - Oak House



What do I need to do?

In the first instance please contact the Bereavement Officers – 01908 996155 / 01908 996154 to discuss the next steps.

Bereavement Manager: Sue Ferrara

Bereavement Officer: Tina John

Medical Examiner Officer: Jennifer Cook

Medical Examiner Officer: Nurul Amin

When a person dies in hospital a Medical Certificate of Cause of Death (MCCD) will be issued, provided there is no Coroner involvement. This **Medical Certificate** is not the official **Death Certificate**, but you will need it to register the death.

One of the team of doctors that cared for your loved one will write the MCCD, which will then be checked by the Medical Examiner. The Medical Examiner's Officer will call the Next of Kin to discuss the cause of death and to ask if they have any concerns about care and treatment of their relative.

The Medical certificate will only be issued once this has taken place.

The role of the Medical Examiner

“The aim of the Medical Examiner is to provide an enhanced degree of independence and objectivity in the scrutiny of in hospital-deaths within the Trust, whilst

improving death certification, referrals to the Coroner, and discussion of causes of death with relatives” The National Quality Boards learning from Death guidance.

How to register a death

The Bereavement service will contact you to explain the process of registration. We fully understand that you may wish to get underway with your arrangements and will support you to do this whilst following the process that the law requires. We will contact you as quickly as we can to enable you to proceed.

Office numbers: 01908 996155 or 01908 996154

If you leave a message we will respond as quickly as we can. You can also contact us via the hospital switchboard on 01908 660033 and ask for us to be bleeped, however we may be with relatives and cannot always respond immediately.

You may use our email

bereavementservice@mkuh.nhs.uk

The office is open: 8am to 4pm Monday to Friday (excluding bank holiday or weekends)

Registering a death should take place within 5 days of the death. If the death has been referred to the Coroner the time frame is longer. Once the Medical Certificate of Cause of Death has been agreed and issued it will be scanned over to the Register Office. We will need the name, telephone number and e-

mail address (if you have one) for the relative who will register the death.

Once the Register Office have checked the certificate, an automated e-mail will be sent to the named relative to book a telephone appointment to register the death.

Once the appointment is booked a confirmation e-mail will be sent which has a pre-registration form attached. The pre-registration form asks for the following information about the person who has died:

- . Date and place of birth.
- . Home address
- . Occupation (If married or a widow, the full name and occupation of their spouse.)
- . If the person was married, the date of birth of their spouse.
- . The NHS number (don't worry if you can't find it).

If the Bereavement Service did not provide an e-mail for the relative, booking can still be made by calling 01908 372101. The contact centre can check they have the documents required and book a telephone registration appointment for you.

Once the death has been registered over the phone, the registrar will issue the following:

- 1. The formal Death Certificate.** A charge is made for this and each copy you require. (The number of copies you require depends on the size of the estate. You will need one for

banks, insurance policies, investments, probate or letters of administration) currently £11 each. These will be sent out to you.

2. A green certificate for burial or cremation. This will be scanned to your Funeral Directors to allow the funeral to take place. The deceased cannot be moved from the hospital until the green form has been provided. If a cremation is going to take place the appropriate forms must also be completed before the deceased is moved. The green form is free of charge.

3. A DWP form BD8 which deals with benefits and state pension.

The Register Office now offers a “Tell Us Once” service. This cancels local authority departments, pensions etc and reduces the number of phone calls you will have to make. This service is free.

The Bereavement Service will send you the following useful documents:

1. Mail cancelling card from The Bereavement Register
2. Hospital Release form which you hand or e-mail to your chosen Funeral Director
3. Bereavement letter from our Risk and Clinical Governance team
4. PALS leaflet

You will be given the opportunity to collect any personal effects. Property that is not collected will be held for a month and then disposed of according to hospital policy. Please be aware that

wedding rings and similar items will be left in place until the deceased is taken to the Funeral Directors of your choice.

Organ donation

The organ donation law changed in England in May 2020 to an 'opt out system'. This means that if you are not in an excluded group and have not confirmed whether you want to be an organ donor (either by recording a decision on the NHS Organ Donor Register, or by speaking to friends and family) it will be considered that you agree to donate your organs when you die.

You still have a choice about whether you wish for your relative to become a donor, and your faith, beliefs and culture will continue to be respected.

For further information on the opt out system you can phone 0300 303 2094.

Viewing in the Mortuary Viewing Suite

The mortuary provides post-mortem facilities and optimum storage for both hospital and community deaths.

Viewings are limited to weekdays only and these are booked with the Bereavement Officer. On some occasions viewings are not possible, and you will be informed of this. If you would like a hospital chaplain to be present at your viewing, then please do ask. Post-mortems, if required, are carried out usually within 48 hours, although bank holidays may cause delays. The Coroner's officers will confirm when they take place.

The mortuary staff care for every patient with respect, and make arrangements for the deceased to be released from the hospital to the funeral directors, providing all documentation is completed.

The Hospital Chaplains

The Hospital Chaplaincy offers pastoral, spiritual and religious support for people of any faith, and those with a non-religious world view. You may simply appreciate having someone else to be with you for a while, or someone to talk to. You may like to arrange a blessing for your relative or feel you would be comforted by prayers being said with you. One of the chaplaincy team can usually be available.

If you have specific religious needs you may prefer to have your own faith community leader with you. You can contact them directly or ask the Chaplain to try to do this for you. If you are not sure who to contact, the chaplain can discuss with you who might be appropriate and can then make contact on your behalf.

The Chaplaincy provides 24 Hour support for patients, families, and staff.

The Chaplaincy can be contacted via the Bereavement service, or you may telephone the direct line 01908 996061. Please leave a message on the answer phone if the Chaplain is not available. Out-of-hours contact can be made through the switchboard on 01908 660033.

Holy books are also available from the Chaplaincy.

The Coroner

It will be necessary for the Coroner to be informed if, for example, your relative or friend's death is sudden or unexpected or has had recent surgery. There are other reasons, but these are the most common. The Coroner is a qualified Lawyer who is responsible for inquiring into the circumstances of some deaths.

You will be informed, as soon as possible, if the death has to be reported to the Coroner as this will have a bearing on the arrangements you can make.

In these circumstances, the death cannot be registered, nor can the funeral take place, without the Coroner's authorisation. However, even if the death has been reported to the Coroner, you should not delay in contacting a Funeral Director who will be able to explain the procedures to you and make the necessary arrangements for the funeral.

The Coroner's Office will contact relatives and inform them of the process . If you have any queries about the procedures involved, the Coroner's Office or the hospital Bereavement service will be able to help you.

A Coroner can order a post-mortem examination without asking relatives' permission, although the relatives are informed. Depending on the cause of death, the Coroner may decide that no further investigation is needed. In these cases, the Coroner will complete the **relevant paperwork** and send it direct to the Register Office. You will be notified of this and then you can make arrangements, refer to "How to Register".

In some circumstances, the Coroner may decide that a full investigation into the death should be held. These investigations

are known as inquests and are held in public. If an inquest is to be held the Coroner's Office will explain the procedures involved and advise you when and where the hearing will be held.

Usually, the inquest is opened and adjourned in the first few days after the death and an interim certificate will be issued to your Funeral Director at this stage to allow the funeral to take place. The inquest is normally concluded at a later date and the death cannot be registered until this process is completed.

Hospital Post-Mortem

Request for Consent to Hospital Post-Mortem – when a Medical Certificate of cause of death and formal notice has already been issued.

If the cause of your relative or friend's death is quite clear the doctor will have provided a **Medical Certificate of Cause of Death** and a **Formal Notice** that the Medical Certificate has been signed.

If the death was known to be caused by a natural illness but the doctors involved with your relative's care wish to know more about the cause of death and study effects of treatment, they may ask you for permission (consent) to carry out a Post-Mortem examination.

Consent

You will be asked for your consent to a Post-Mortem being conducted, and to confirm this officially in writing you will be asked to sign a consent form. We believe families should be given the opportunity to understand why a Post-Mortem is suggested, the process involved, and your rights in the decision making.

You can choose to limit the extent of the examination and you can find out more details about this and other issues about the Post-Mortem examination from a booklet produced by the Department of Health called 'Guide to Post-Mortem'.

This booklet explains in more detail:

- . Limited Post-mortem examination
- . Organs being taken or held for further examination
- . Disposal of any tissue or organs taken
- . Medical research and education.

If you do not wish to give consent

It is entirely your decision whether you give consent for a Hospital Post-Mortem and if you decide not to you can still register the death and hold a funeral in the normal way. Your decision will not affect either you or anyone else in the future.

Further Information:

www.doh.gov.uk/pmconsent

Arranging the funeral and choosing a Funeral Director

You do not have to wait until you have registered the death before contacting a funeral director, but if there is a delay for the certificate for any reason the funeral may be delayed.

Funeral Directors (or Undertakers) offer advice and a choice of arrangements at varying prices. These can be

quite costly affairs. Always ask to see a brochure and price list before you decide. It might be worth contacting more than one to compare prices. We have a list of local Directors which you can obtain this from the Bereavement Officer.

Some families wish to conduct their own funerals. To get more advice about arranging the funeral yourself contact www.naturaldeath.org.uk or Tel: 08712 882098, the Bereavement service will be able to give you a brief outline of what is required.

The www.direct.gov.uk website is full of very useful information, on matters around after-death care.

After the Funeral

Settling the deceased person's estate can be confusing, time-consuming, and distressing.

If there is a Will these wishes should be carried out. You may need to use the services of a solicitor. However, Probate is possible to do yourself.

To do list: this is a guide, it is not definitive

*Denotes services cancelled by "Tell us once"

Organisation	Contact Details	Notified
Executer of will, Solicitor		
Probate	Gov.uk website	
*Pensions: State + Benefits Private	0345 606 0265	
Insurance Company		
Bank/Building society		
Mortgage provider, Housing association, *Council housing office		
*HM Revenue and Customs tax office		
School, college, workplace, trade union		
Utility providers: Gas Electricity Water board Telephone TV/Internet		
Post Office		
Car Insurance		
*DVLA		
*Passport Office		
Social Services, Job Centre		
Doctor		
Sporting, social clubs		

Counselling and Advice

People react to a death in many different ways. Some find it hard to talk about the experience, some find it helps. Some people feel guilty or even angry. Some work through their grief quicker than others. We all cope differently, and because of this you need to respect other people's feelings and just be aware that it is their way of coping.

If you need help to come to terms with your sadness and feel that outside help may be of use please see the contact list below for names and numbers.

Looking after Yourself

The death of a family member or a friend can arouse emotional responses that you may not have experienced before. Here are a few suggestions that you may find helpful:

- Allow yourself time to rest, think and sleep
 - Make time with family and friends
 - Eat regularly
 - Try to avoid making any major decisions too quickly
 - Keep to a routine to help you get through one day at a time
 - Schedule activities to get you through the worst times
-

- Accept your feelings as normal
- Vent your feelings (talking, crying, writing, physical exercise, listening to music, compiling an album or box of memories)
- Most importantly be patient, kind and gentle with yourself

Members of your caring team who are here to help you:

Sue Ferrara	01908 996155
Tina John	01908 996154
Chaplaincy	01908 996061
Jennifer Cook	01908 995521
Nurul Amin	01908 996292

If you need to speak to someone urgently you can ring the hospital switchboard on the number below and ask for the Bereavement team or Chaplaincy team to be bleeped.

Hospital Switchboard	01908 660033
----------------------	--------------

Helpful Organisations

MK Bereavement Counselling Service	07483 308032
Samaritans	116123

Cruse helpline 0808 8081677

Child Bereavement
Charity 01908 550895 / 08000 288840

Lesbian & Gay
Bereavement project 0208 2000 511

RoadPeace 0845 450 0355

Silverline 0800 48090

MK Bereaved Parents Group 079177 43816



“Tell us once.”

A service provided at the Register Office.

How the service can help you.

When someone has died there are lots of things that need to be done at a time when you are least likely to want to do it.

The death needs to be registered with the Registrar and once registration is complete, several Government organisations have to be contacted and given the same information. The Registrar will provide a letter containing a unique reference number and contact details to enable this to be done by phone or 24/7 online.

It saves you having to repeat yourself with all the personal details as services can access Register documentation.

This service can be used up to 28 days after the death is registered.



What happens to the information?

It is possible to report the death to these organisations and services if you decide to use the service:

- **Local Councils**
 - Housing Benefit Office
 - Council Tax Benefit Office
 - Council Tax
 - Collection of payment for local services
 - Libraries
 - Electoral Services
 - Blue Badge
 - Adult Services
 - Children's Services
 - Council Housing
- **Department for Work and Pensions**
 - Pension, Disability and Carers Service
 - Jobcentre Plus
 - Overseas Health Team
- **HM Revenue & Customs**
 - Child Benefit
 - Child Tax Credit & Working Tax Credit
 - Personal Taxation
- **Identity and Passport Service**
- **Driver and Vehicle Licensing Agency**
- **Ministry of Defence, Service Personnel and Veterans Agency**
 - War Pensions Scheme

How we will treat the information you give us

The information you give will be treated securely and confidentially. The organisations who are contacted will use the information to update records; to end services, benefits and credits as appropriate; and to resolve any outstanding issues. They may use this information in other ways, but only as the law allows.

Information you will need to use the service

It will help if you have the following information with you, about the person who has died, when you use the service:

- Their National Insurance number and date of birth
- Details of any benefits or services they were receiving
- Their death certificate
- Their Driving Licence or Driving Licence number
- Their Passport or Passport number and town/country of birth

Feedback

Following this time of sadness, we invite any comments with regard to your relative's end-of-life care, so that we can learn and develop our services. Please use the Freepost at the bottom of the page.

If you could tell us the ward area and name of your relative that would be helpful, but this information is not essential.

Attention of Sue Ferrara. Bereavement Manager
Free post RLXB-TUUR-JCLS
Milton Keynes University Hospital
NHS Foundation Trust
Standing Way, Eaglestone
Milton Keynes
MK65LD

Please note that although Milton Keynes University Hospital NHS Foundation Trust may include links to external websites, the Trust is not responsible for the accuracy or content therein.

We ask for information about you so that you can receive proper care and treatment. This information remains confidential and is stored securely by the Trust in accordance with the provisions of the Data Protection Act 2018/GDPR. Further guidance can be found within our privacy notice found on our Trust website: www.mkuh.nhs.uk

Author: Bereavement Manager
Reviewed by: Sue Ferrara
Date written: 07/2021
Review Date: 07/2023
Version No: ORG/PI/5/V8

©Milton Keynes University Hospital
Standing Way
Eaglestone
Milton Keynes, MK6 5LD

www.mkuh.nhs.uk