

## Organisational Structure 2021



Milton Keynes University Hospital Board of Directors	3
Executive Directors roles and responsibilities	4
Governance Structure	5
Non-Executive Directors roles and responsibilities	6
Council of Governors constituents	6
Divisions and Clinical Service Units (CSUs) Divisional	7
Triumvirate & Accountability	7
Medicine Clinical Service Units (CSUs)	8
Women and Children's Clinical Service Units (CSUs)	9
Core Clinical Services Clinical Service Units (CSUs)	10
Surgery Clinical Service Units (CSUs)	11

# Milton Keynes University Hospital Board of Directors



Chair  
Alison Davis



Chief Executive  
Joe Harrison



Andrew Blakeman



Director of Patient Care  
& Chief Nurse  
Nicola Burns-Muir



Director of Finance  
Terry Whittle



Deputy CEO  
John Blakesley



Medical Director  
Ian Reckless



Director of  
Corporate Affairs  
Kate Jarman



Helen Smart



Heidi Travis



Nicky Mcleod



Director of Operations  
Emma Livesley



Director of Transformation  
& Partnerships  
Jackie Collier



Director of Workforce  
Danielle Petch



Haider Hussain

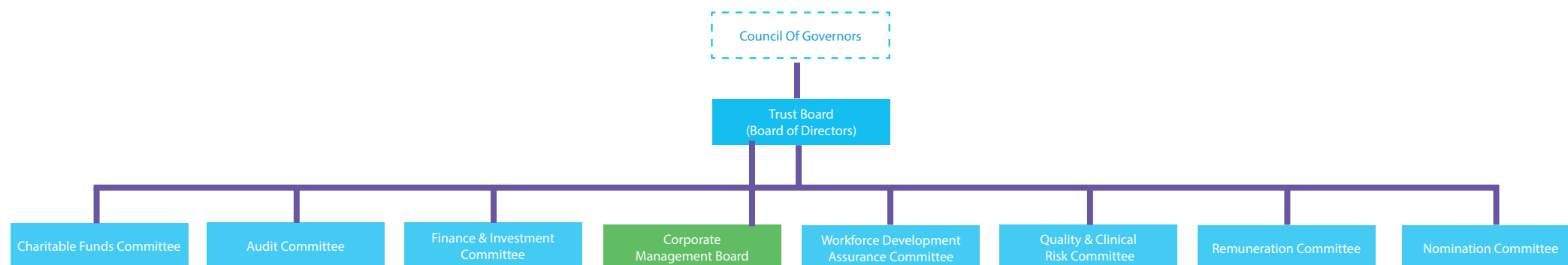


To be announced

# Executive Directors roles and responsibilities

			Chief Executive			
Director of Operations	Director of Workforce	Director of Patient Care & Chief Nurse	Deputy Chief Executive	Medical Director	Director of Finance	Director of Corporate Affairs
Medicine	HR Business partnering & medical staffing	Lead for Nurses & Midwives	Information & Performance	Lead for Medical & Dental Staff	Financial Governance	Legal Services
Surgery	Employee relations	Infection, Prevention & Control	IT	Caldicott Guardian	Contracting	Risk & Governance
Women and Children	Statutory compliance with employment law	Safeguarding Children & Adults	Performance Management	Revalidation of Medical & Dental staff	Internal & External Audit	Communications
Core Clinical	Education, PGC & Library	Nursing Education & Development	Estates	Medical School	Capital Programme	Charitable Funds & Fundraising
Operations	Occupational health	PALS & Complaints	Security	Research and Development	Procurement	Membership
Emergency Planning	Recruitment		e-CARE		Corporate Plan	Regulator liaison
			Transformation			Executive Support Team
						Health & Safety
						Patient Experience
						Staff Engagement

# Governance Structure



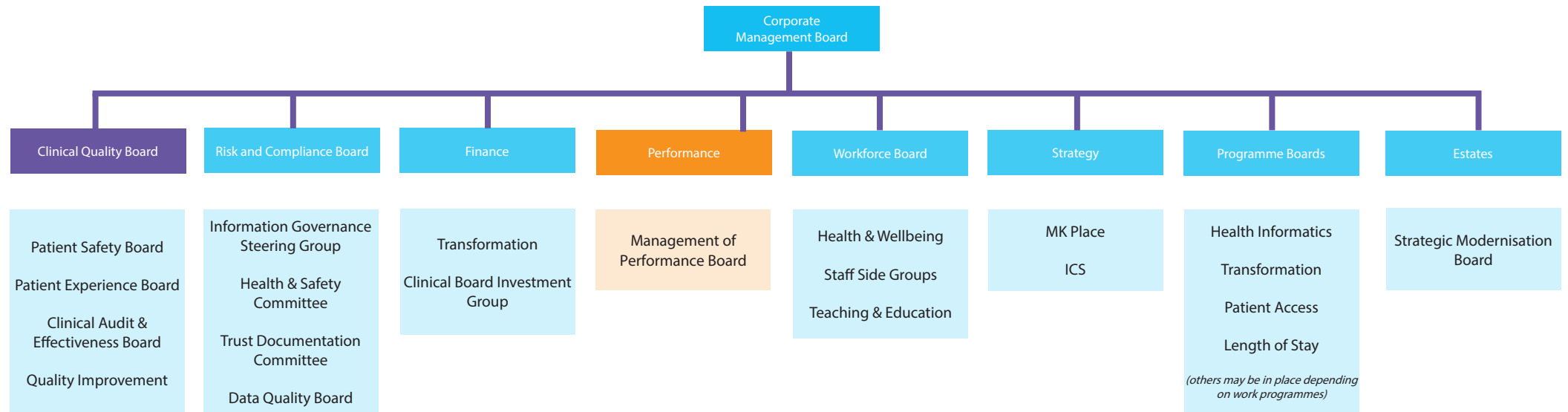
This is the Trust's **coporate governance structure** at **Trust Board (Board of Directors)** level.

The role of the Trust Board is to set the strategic direction of the organisation, to ensure appropriate governance, and that the business of the Trust - in how it performs, the quality of the care and services it provides, and how it uses its resources - is carried out appropriately and in accordance with all relevant legal, statutory and regulatory frameworks.

This structure diagram shows the Board and its sub-Committee. As a Foundation Trust, MKUH also has an elected Council of Governors (public, staff and stakeholder) which holds the Board to account.

The Trust has a ward to Board governance structure, enabling oversight, escalation and feedback from wards and departments to the Board, through an established governance, oversight and management structure.

# Management Performance Board (Divisions)



This is the Trust's **Corporate Governance Structure** at Executive Management Board level.

You can see the main reporting boards and groups to the **Trust Executive Board**, which meets on every 1st Wednesday of the month. Some of these groups have a direct reporting line to the EMB too - these include the Information Governance Steering Group and the Health and Safety Committee (as part of their legal duties).

The Trust Executive Board meets **once a month** focusing on corporate reporting, and divisional reporting. The Management of Performance Board meets on every 4th Wednesday of the month



# Divisional Management

**The Corporate Management Board** meets twice a month. One of those meetings focuses on divisional performance and reporting (the **Management of Performance Board**)

## Management of Performance Board

The Divisional Director (a doctor); Associate Director of Operations; and the Chief Nurse present the performance (quality, finance, operational performance, compliance and governance) to the Executive Management Board. They are held to account for divisional performance and escalate any risks and issues to the wider Board.

## The Divisional Governance Structure

The structure shown on this page tells you how the governance chain links up from ward/department through the clinical divisions to the Executive Management Board.

You should be familiar with the meetings described here and will attend many of them, depending on your role. If you are unsure about the governance and reporting structure for your division, please speak to your manager in the first instance.

Corporate  
Management Board

Divisional  
Management Board

Divisional  
Management  
Meetings

Clinical Service  
Unit Management  
Meetings

Clinical Improvement  
Group Meetings

Chaired by Divisional Director, meets x10 a year. Clinical Service Unit leads all attend, trends and assurance, strategy, performance, finance, clinical governance and quality). Covers the quality, performance and finance agenda at divisional level.

Chaired by CSU Lead, meets x10 a year, two way information flow (reporting, escalation and cascade). Covers the quality, performance and finance agenda at CSU level.

**Clinical Improvement Groups** (CIGs) meet in every CSU (and also in specialties in larger CSUs and CIGs). CIGs meet to discuss clinical governance and quality, including incidents, complaints, risks, audit, compliance, etc), mortality & morbidity etc.

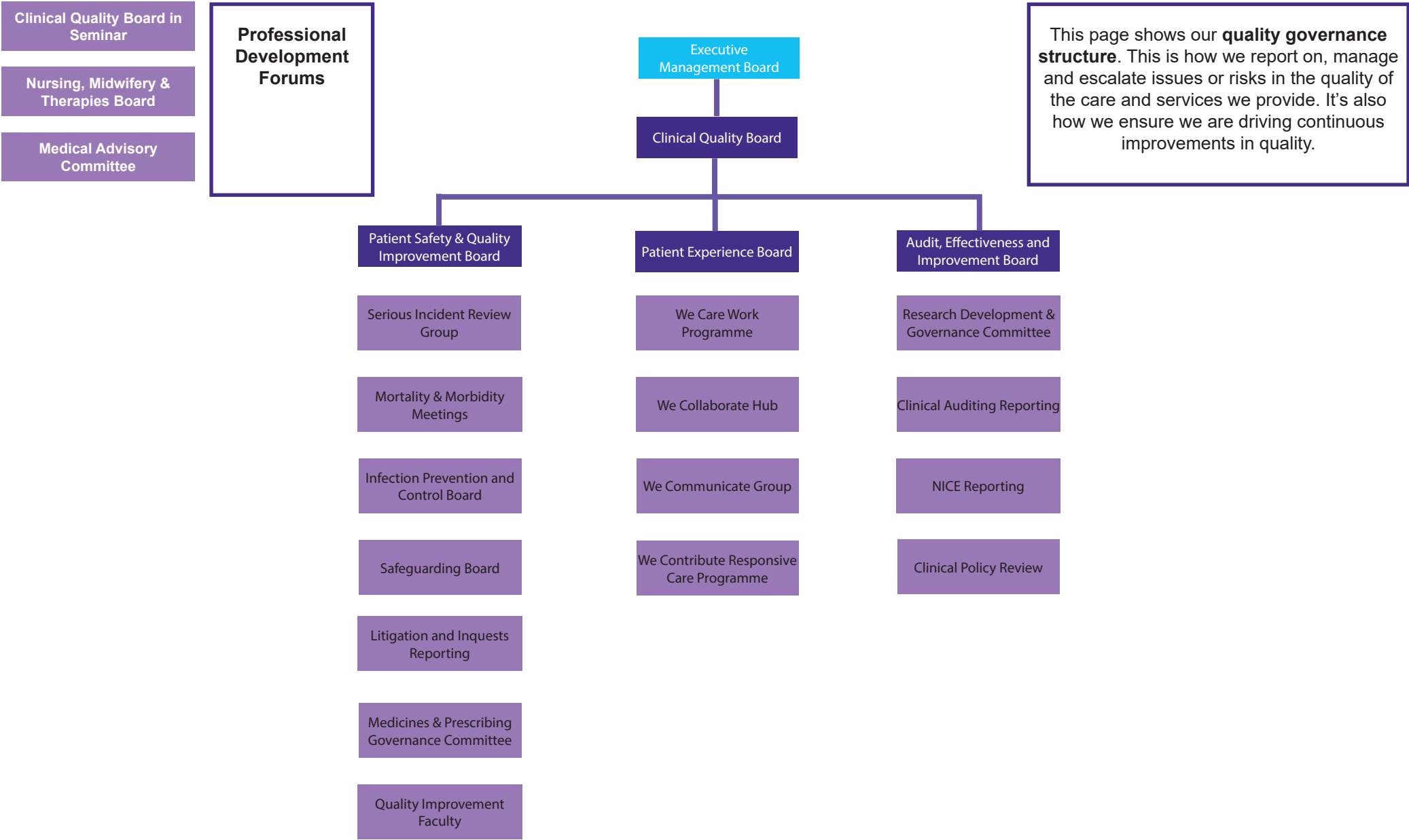
## There are four clinical divisions:

1. Medicine
2. Surgery
3. Core Clinical
4. Women and Children

## And supporting corporate functions:

Workforce  
Finance  
Corporate Affairs  
Estates, IT, Information, Performance

# Corporate Quality Governance Structure





# A Ward to Board Governance Structure

## **Ward to Board**

The Trust has a ward to Board governance structure, enabling oversight, escalation and feedback from wards and departments to the Board, through an established governance, oversight and management structure.

This means that there is a clear way of raising an issue at ward, department or specialty level and understanding how that issue can be escalated to the Board. This is done through our governance structure, as well as through speaking-up routes.

An example of ward to Board governance is as follows:

A patient falls on ward 1. An incident form is completed on Datix and is investigated by a relevant member of staff. A Falls Summit takes place on the ward as part of that process and to understand any immediate learning. The fall is discussed at the Clinical Improvement Group for Acute Medicine (relevant Clinical Specialty Unit) and Medicine Divisional Meeting (chaired by the Divisional Triumverate). The investigation report also goes to the Serious Incident Review Group, chaired by the Medical Director. The incident is not a Serious Incident but is recorded and discussed at SIRG. The fall is also reported upwards, both on the performance dashboard (as a metric) and in a narrative quality report. These reports go to Clinical Quality Board and Executive Management Board (chaired by the Chief Executive). An escalation and assurance report on falls within the last quarter goes to Quality and Clinical Risk Committee (chaired by a Non-Executive Director). This Committee reports on issues, actions and assurances in relation to quality and clinical risk to the Trust Board.

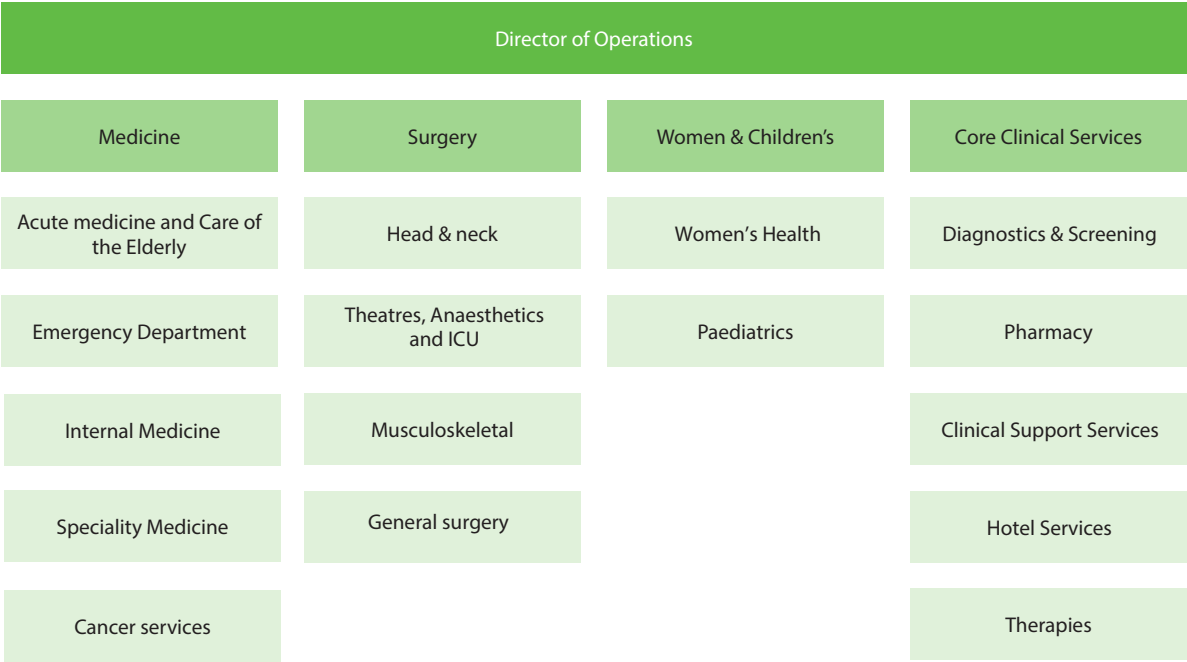
# Non-Executive Directors roles and responsibilities

Chair				
Chair of Quality and Clinical Risk Committee	Chair of Audit Committee	Chair of Finance & Investment Committee	Chair of Charitable Funds Committee	Chair of Workforce and Development Assurance Committee
Quality of Care	Internal & external audits	Financial position of the trust	Benefit of charitable funds to patients	Workforce strategy
Serious incidents & complaints	Counter fraud	Cash flow forecasts	Adherence to charities commission regulations	Equality & diversity
Clinical Governance Framework	Board assurance framework & risk register	Capital projects		Education
	Cyber Security	Investment Decisions		Medical School oversight

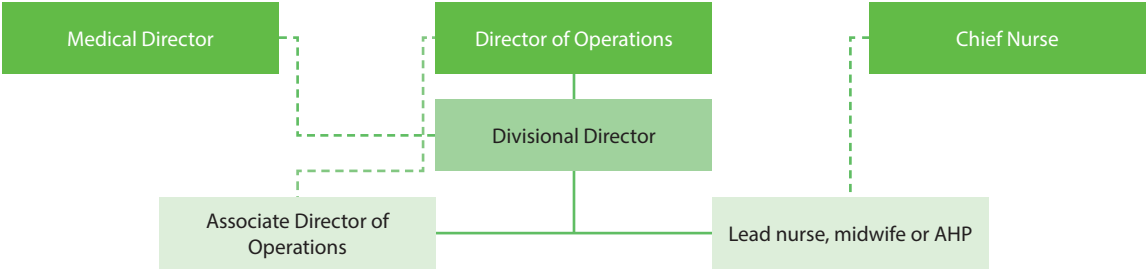
# Council of Governors constituents

Public		Staff		Partnerships	
Bletchley, Fenny Stratford, Denbigh, Eaton Maner & Whaddon	Emerson Valley, Furzton & Loughton Park	Doctors & dentists	Nurses & midwives	CHS & CCG	MK Business Leaders
Linford south, Bradwell & Campbell Park	Hanslope Park, Olney, Sharnington, Linford North, Newport Pagnell	Scientists, technical & AHPs	Non clinical staff Groups	Voluntary organisations	Local authority
Walton Park, Danesborough, Middleton & Woughton	Outer Catchment Area inc. Bucks & Aylesbury Vale			Healthwatch	

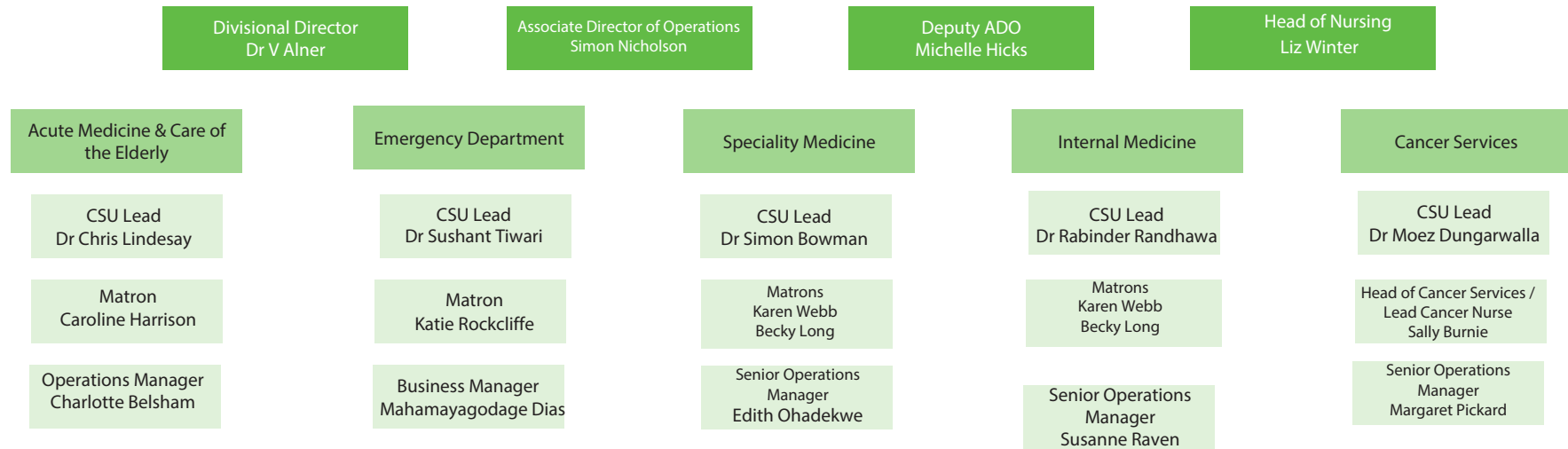
# Divisions and clinical service units (CSUs)



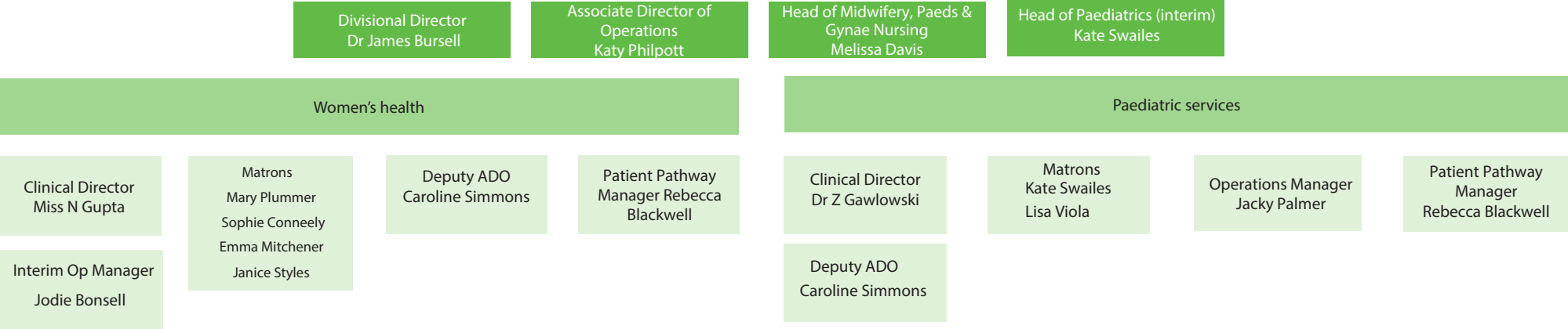
## Divisional triumvirate & accountability



# Medicine clinical service units (CSUs)



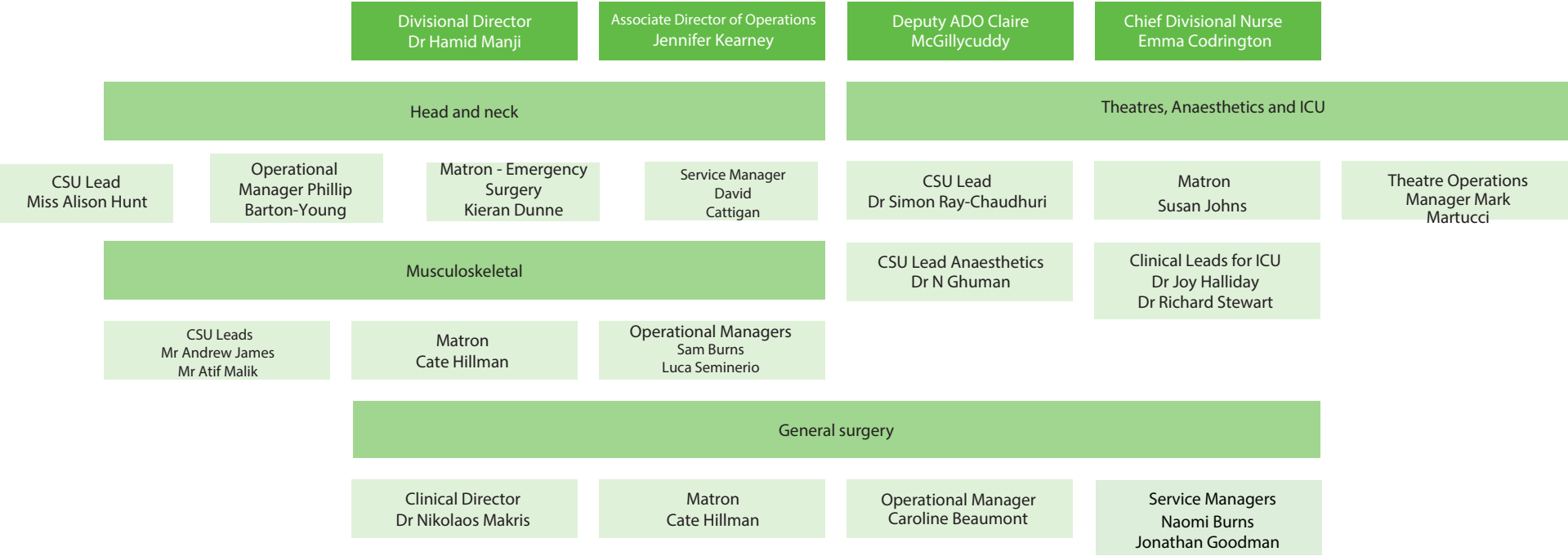
# Women and Children’s clinical service units (CSUs)



# Core Clinical Services clinical service units (CSUs)

	Divisional Director Dr A Molyneux	Associate Director of Operations Steve Collins	AHP Lead Jamie Stamp	
Diagnostic & Screening	Hotel Services	Pharmacy	Clinical Support Services	
CSU Lead Dr Khalid Enver	CSU Lead Steven Hall	CSU Lead Helen Chadwick	CSU Lead Dr Khalid Enver	
Imaging Paula Robinson	Catering Francesco Fiore		HSDU Marea Lawford	
Pathology Jill Beech	Accomodation Simone Pickles		Health Psychology Amelie Bobsien	
Bowel Screening Programme and Diabete Eye Screening Programme Greg Keetch	Support Services, Linen Room, Post Room Rachel Ellis		Therapies Jamie Stamp	
	Domestics Simon Mannall			

# Surgery clinical service units (CSUs)





# TheMKWay

CARE. COMMUNICATE.

COLLABORATE. CONTRIBUTE.

